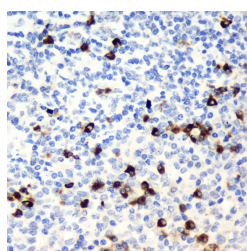


## CD19 Polyclonal Antibody

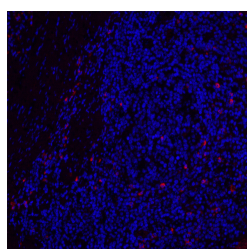
<b>Catalog No.</b>	E-AB-70018	<b>Reactivity</b>	H
<b>Storage</b>	Store at -20°C. Avoid freeze / thaw cycles.	<b>Host</b>	Rabbit
<b>Applications</b>	IHC,IF	<b>Isotype</b>	IgG

**Note:** Centrifuge before opening to ensure complete recovery of vial contents.

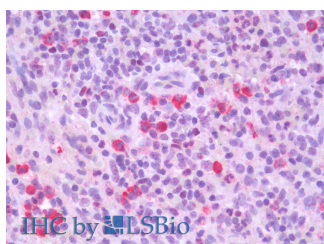
### Images



Immunohistochemistry analysis of paraffin-embedded Human tonsil using CD19 Polyclonal Antibody at dilution of 1:300.



Immunofluorescence analysis of paraffin-embedded Human tonsil using CD19 Polyclonal Antibody at dilution of 1:200.



Immunohistochemistry analysis of paraffin-embedded Human Spleen using CD19 Polyclonal Antibody(Elabscience® Product Detected by Lifespan).

### Immunogen Information

<b>Immunogen</b>	KLH conjugated Synthetic peptide corresponding to Mouse CD19
<b>Swissprot</b>	P15391,P25918
<b>Synonyms</b>	CD19, B4, CVID3, CD19 molecule

### Product Information

<b>Buffer</b>	PBS with 0.02% sodium azide, 1% protective protein and 50% glycerol, pH7.4
<b>Purify</b>	Affinity purification
<b>Dilution</b>	IHC 1:100-1:500, IF 1:100-1:500

### Background

CD19 is a B cell-specific molecule that controls B cell activation by complexing with the BCR. CD19 is a member of the Ig superfamily and is the dominant component for the signaling complex on B cells that includes CD21,CD81,and CD22. Humans with CD19 deficiency have reduced proliferative responses to BCR stimulation in vitro and mount impaired Ab responses to vaccination.

#### For Research Use Only

Thank you for your recent purchase.  
 If you would like to learn more about antibodies, please visit [www.elabscience.com](http://www.elabscience.com).

**Focus on your research  
 Service for life science**

Applications:WB-Western Blot IHC-Immunohistochemistry IF-Immunofluorescence IP-Immunoprecipitation FC-Flow cytometry ChIP-Chromatin Immunoprecipitation Reactivity: H-Human R-Rat M-Mouse Mk-Monkey Dg-Dog Ch-Chicken Hm-Hamster Rb-Rabbit Sh-Sheep Pg-Pig Z-Zebrafish X-Xenopus C-Cow.