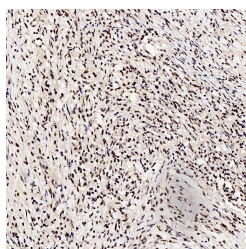


c-Fos Polyclonal Antibody

Catalog No.	E-AB-70027	Reactivity	H,M,R
Storage	Store at -20°C. Avoid freeze / thaw cycles.	Host	Rabbit
Applications	IHC	Isotype	IgG

Note: Centrifuge before opening to ensure complete recovery of vial contents.

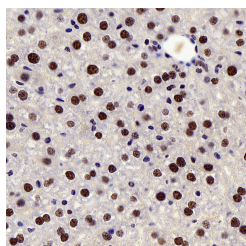
Images



Immunohistochemistry analysis of paraffin-embedded human lung cancer using c-Fos Polyclonal Antibody at dilution of 1:200.



Immunohistochemistry analysis of paraffin-embedded human stomach cancer using c-Fos Polyclonal Antibody at dilution of 1:200.



Immunohistochemistry analysis of paraffin-embedded mouse liver using c-Fos Polyclonal Antibody at dilution of 1:200.

Immunogen Information

Immunogen	KLH conjugated Synthetic peptide corresponding to Mouse c-FOS
Swissprot	P01100,P01101,P12841
Synonyms	FOS, AP-1, C-p55, Fos proto-oncogene, AP-1 transcription factor subunit

Product Information

Buffer	PBS with 0.02% sodium azide, 1% protective protein and 50% glycerol, pH7.4
Purify	Affinity purification
Dilution	IHC 1:200-1:1000

Background

The Fos gene family consists of 4 members: FOS, FOSB, FOSL1, and FOSL2. These genes encode leucine zipper proteins that can dimerize with proteins of the JUN family, thereby forming the transcription factor complex AP-1. As such, the FOS proteins have been implicated as regulators of cell proliferation, differentiation, and transformation. In some cases, expression of the FOS gene has also been associated with apoptotic cell death.

For Research Use Only

Thank you for your recent purchase.
 If you would like to learn more about antibodies, please visit www.elabscience.com.

**Focus on your research
 Service for life science**

Applications: WB-Western Blot IHC-Immunohistochemistry IF-Immunofluorescence IP-Immunoprecipitation FC-Flow cytometry ChIP-Chromatin Immunoprecipitation Reactivity: H-Human R-Rat M-Mouse Mk-Monkey Dg-Dog Ch-Chicken Hm-Hamster Rb-Rabbit Sh-Sheep Pg-Pig Z-Zebrafish X-Xenopus C-Cow.