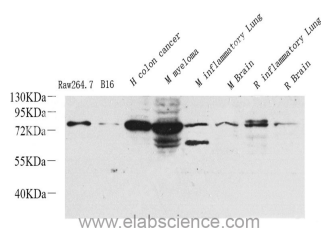


## COX2 Polyclonal Antibody

|                     |                                             |                   |        |
|---------------------|---------------------------------------------|-------------------|--------|
| <b>Catalog No.</b>  | E-AB-70031                                  | <b>Reactivity</b> | H,M,R  |
| <b>Storage</b>      | Store at -20°C. Avoid freeze / thaw cycles. | <b>Host</b>       | Rabbit |
| <b>Applications</b> | WB                                          | <b>Isotype</b>    | IgG    |

**Note:** Centrifuge before opening to ensure complete recovery of vial contents.

### Images



Western Blot analysis of various samples using COX2 Polyclonal Antibody at dilution of 1:1000.

### Immunogen Information

|                  |                                                                                                   |
|------------------|---------------------------------------------------------------------------------------------------|
| <b>Immunogen</b> | KLH conjugated Synthetic peptide corresponding to Mouse COX2                                      |
| <b>Swissprot</b> | P35354,Q05769,P35355                                                                              |
| <b>Synonyms</b>  | PTGS2, COX-2, COX2, GRIPGHS, PGG/HS, PGHS-2, PHS-2, hCox-2, prostaglandin-endoperoxide synthase 2 |

### Product Information

|                      |                                                                            |
|----------------------|----------------------------------------------------------------------------|
| <b>Calculated MW</b> | 74kDa                                                                      |
| <b>Observed MW</b>   | 74kDa                                                                      |
| <b>Buffer</b>        | PBS with 0.02% sodium azide, 1% protective protein and 50% glycerol, pH7.4 |
| <b>Purify</b>        | Affinity purification                                                      |
| <b>Dilution</b>      | WB 1:500-1:2000                                                            |

### Background

Prostaglandin-endoperoxide synthase (PTGS), also known as cyclooxygenase, is the key enzyme in prostaglandin biosynthesis, and acts both as a dioxygenase and as a peroxidase. There are two isozymes of PTGS: a constitutive PTGS1 and an inducible PTGS2, which differ in their regulation of expression and tissue distribution. This gene encodes the inducible isozyme.

#### For Research Use Only

Thank you for your recent purchase.  
 If you would like to learn more about antibodies, please visit [www.elabscience.com](http://www.elabscience.com).

**Focus on your research  
 Service for life science**

Applications:WB-Western Blot IHC-Immunohistochemistry IF-Immunofluorescence IP-Immunoprecipitation FC-Flow cytometry ChIP-Chromatin Immunoprecipitation Reactivity: H-Human R-Rat M-Mouse Mk-Monkey Dg-Dog Ch-Chicken Hm-Hamster Rb-Rabbit Sh-Sheep Pg-Pig Z-Zebrafish X-Xenopus C-Cow.