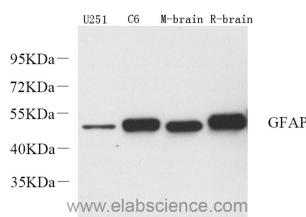


GFAP Polyclonal Antibody

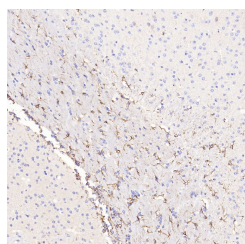
Catalog No.	E-AB-70040	Reactivity	H,M,R
Storage	Store at -20°C. Avoid freeze / thaw cycles.	Host	Rabbit
Applications	WB,IHC,IF	Isotype	IgG

Note: Centrifuge before opening to ensure complete recovery of vial contents.

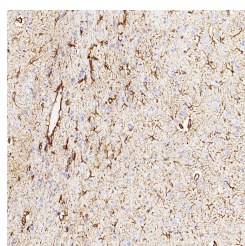
Images



Western Blot analysis of various samples using GFAP Polyclonal Antibody at dilution of 1:2000.



Immunohistochemistry analysis of paraffin-embedded mouse brain using GFAP Polyclonal Antibody at dilution of 1:500.



Immunohistochemistry analysis of paraffin-embedded rat brain using GFAP Polyclonal Antibody at dilution of 1:500.

Immunogen Information

Immunogen	KLH conjugated Synthetic peptide corresponding to Mouse GFAP
Swissprot	P14136,P03995,P47819
Synonyms	GFAP, ALXDRD, glial fibrillary acidic protein

Product Information

Calculated MW	49kDa
Observed MW	49kDa
Buffer	PBS with 0.02% sodium azide, 1% protective protein and 50% glycerol, pH7.4
Purify	Affinity purification
Dilution	WB 1:1000-1:3000, IHC 1:300-1:800, IF 1:200-1:500

Background

GFAP (Glial fibrillary acidic protein), an intermediate-filament (IF) protein, is specifically expressed in cells of astroglial lineage and is widely used to mark the astroglia in the brain. It is also used as a marker for intracranial and intraspinal tumors arising from astrocytes.

For Research Use Only

Thank you for your recent purchase.
 If you would like to learn more about antibodies, please visit www.elabscience.com.

**Focus on your research
 Service for life science**

Applications: WB-Western Blot IHC-Immunohistochemistry IF-Immunofluorescence IP-Immunoprecipitation FC-Flow cytometry ChIP-Chromatin Immunoprecipitation Reactivity: H-Human R-Rat M-Mouse Mk-Monkey Dg-Dog Ch-Chicken Hm-Hamster Rb-Rabbit Sh-Sheep Pg-Pig Z-Zebrafish X-Xenopus C-Cow.