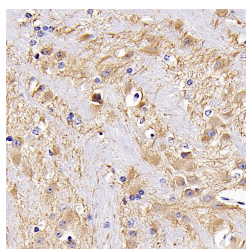


MAP2 Polyclonal Antibody

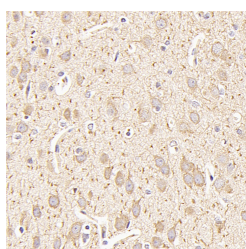
Catalog No.	E-AB-70056	Reactivity	M,R
Storage	Store at -20°C. Avoid freeze / thaw cycles.	Host	Rabbit
Applications	IHC	Isotype	IgG

Note: Centrifuge before opening to ensure complete recovery of vial contents.

Images



Immunohistochemistry analysis of paraffin-embedded mouse brain using MAP2 Polyclonal Antibody at dilution of 1:300.



Immunohistochemistry analysis of paraffin-embedded rat brain using MAP2 Polyclonal Antibody at dilution of 1:500.

Immunogen Information

Immunogen	KLH conjugated Synthetic peptide corresponding to Mouse MAP2
Swissprot	P20357,P15146
Synonyms	MAP2, MAP2A, MAP2B, MAP2C, microtubule associated protein 2

Product Information

Buffer	PBS with 0.02% sodium azide, 1% protective protein and 50% glycerol, pH7.4
Purify	Affinity purification
Dilution	IHC 1:200-1:800

Background

The exact function of MAP2 is unknown but MAPs may stabilize the microtubules against depolymerization. They also seem to have a stiffening effect on microtubules. It contains 3 Tau/MAP repeats. Phosphorylated at serine residues in K-X-G-S motifs by causing MAP/microtubule affinity-regulating kinase (MARK1 or MARK2), detachment from microtubules, and their disassembly.

For Research Use Only

Thank you for your recent purchase.
 If you would like to learn more about antibodies, please visit www.elabscience.com.

**Focus on your research
 Service for life science**

Applications:WB-Western Blot IHC-Immunohistochemistry IF-Immunofluorescence IP-Immunoprecipitation FC-Flow cytometry ChIP-Chromatin Immunoprecipitation Reactivity: H-Human R-Rat M-Mouse Mk-Monkey Dg-Dog Ch-Chicken Hm-Hamster Rb-Rabbit Sh-Sheep Pg-Pig Z-Zebrafish X-Xenopus C-Cow.