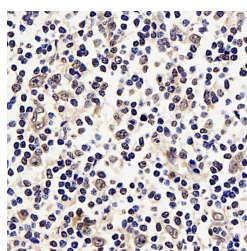


p21 Polyclonal Antibody

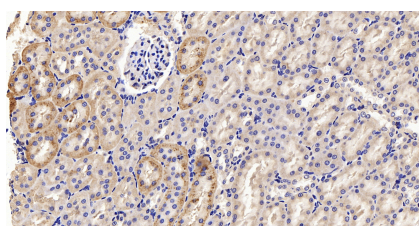
Catalog No.	E-AB-70068	Reactivity	H,M,R
Storage	Store at -20°C. Avoid freeze / thaw cycles.	Host	Rabbit
Applications	IHC	Isotype	IgG

Note: Centrifuge before opening to ensure complete recovery of vial contents.

Images



Immunohistochemistry analysis of paraffin-embedded Human tonsil using p21 Polyclonal Antibody at dilution of 1:300.



Immunohistochemistry analysis of paraffin-embedded Rat kidney using p21 Polyclonal Antibody at dilution of 1:300.

Immunogen Information

Immunogen	KLH conjugated Synthetic peptide corresponding to Mouse P21
Swissprot	P38936,P39689
Synonyms	CDKN1A, CAP20, CDKN1, CIP1, MDA-6, P21,SDI1,WAF1,p21CIP1, cyclin-dependent kinase inhibitor 1A, cyclin dependent kinase inhibitor 1A

Product Information

Buffer	PBS with 0.02% sodium azide, 1% protective protein and 50% glycerol, pH7.4
Purify	Affinity purification
Dilution	IHC 1:200-1:800

Background

CDKN1A (p21,CIP1,WAF1),a cyclin-dependent kinase inhibitor,is necessary for proper control of the cell cycle and premature senescence. P21 is a cyclin-dependent kinase (CDK) inhibitor that suppresses proliferation by inhibiting CDK2 and CDK1 activity at the G1/S and G2/M transitions. P21 is a major mediator of p53 to induce cell cycle arrest in G1. p21 can interact with proliferating cell nuclear antigen (PCNA),and plays a regulatory role in S phase DNA replication and DNA damage repair. P21 was reported to be specifically cleaved by CASP3-like caspases,which thus leads to a dramatic activation of CDK2,and may be instrumental in the execution of apoptosis following caspase activation. Overexpression of p21 decreases the expression levels of cell cycle progression genes and upregulates senescence-inducing genes.

For Research Use Only

Thank you for your recent purchase.
 If you would like to learn more about antibodies,please visit www.elabscience.com.

**Focus on your research
 Service for life science**

Applications:WB-Western Blot IHC-Immunohistochemistry IF-Immunofluorescence IP-Immunoprecipitation FC-Flow cytometry ChIP-Chromatin Immunoprecipitation Reactivity: H-Human R-Rat M-Mouse Mk-Monkey Dg-Dog Ch-Chicken Hm-Hamster Rb-Rabbit Sh-Sheep Pg-Pig Z-Zebrafish X-Xenopus C-Cow.