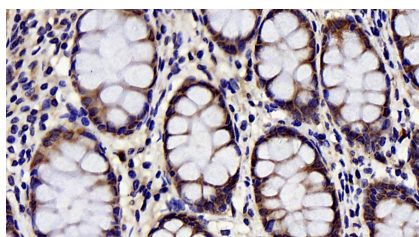


## CHOP Polyclonal Antibody

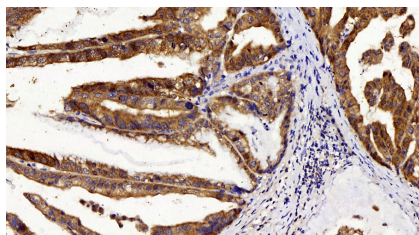
|                     |   |                   |        |
|---------------------|---|-------------------|--------|
| <b>Catalog No.</b>  | E-AB-70087                                  | <b>Reactivity</b> | H,M,R  |
| <b>Storage</b>      | Store at -20°C. Avoid freeze / thaw cycles. | <b>Host</b>       | Rabbit |
| <b>Applications</b> | IHC   | <b>Isotype</b>    | IgG    |

**Note:** Centrifuge before opening to ensure complete recovery of vial contents.

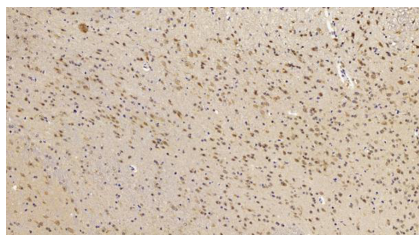
### Images



Immunohistochemistry analysis of paraffin-embedded human colon using CHOP Polyclonal Antibody at dilution of 1:300.



Immunohistochemistry analysis of paraffin-embedded human stomach cancer using CHOP Polyclonal Antibody at dilution of 1:300.



Immunohistochemistry analysis of paraffin-embedded mouse brain using CHOP Polyclonal Antibody at dilution of 1:300.

### Immunogen Information

|                  |  |
|------------------|--|
| <b>Immunogen</b> | KLH conjugated Synthetic peptide corresponding to Mouse CHOP   |
| <b>Swissprot</b> | P35638,P35639,Q62857   |
| <b>Synonyms</b>  | DDIT3,CEBPZ, CHOP-10, CHOP10, GADD153,DNA damage-inducible transcript 3, DNA damage inducible transcript 3 |

### Product Information

|                 |  |
|-----------------|--|
| <b>Buffer</b>   | PBS with 0.02% sodium azide, 1% protective protein and 50% glycerol, pH7.4 |
| <b>Purify</b>   | Affinity purification  |
| <b>Dilution</b> | IHC 1:100-500  |

### Background

CHOP,also known as GADD153 or DDIT3,is a highly conserved gene in both the structural and regulatory regions to hamster gene.Imposed by unfolded and malfolded proteins,CHOP is significantly induced by ER stress,deficiency of CHOP prevents cell from ER stress. CHOP is considered a proapoptotic marker of ER stress dependent cell death. CHOP acts as a dominant-negative inhibitor of the transcription factor C/EBP and LAP by forming a heterodimer. It may play an important role in the malignant transformation of nevus to melanoma.

#### For Research Use Only

Thank you for your recent purchase.  
 If you would like to learn more about antibodies,please visit [www.elabscience.com](http://www.elabscience.com).

**Focus on your research  
 Service for life science**

Applications:WB-Western Blot IHC-Immunohistochemistry IF-Immunofluorescence IP-Immunoprecipitation FC-Flow cytometry ChIP-Chromatin Immunoprecipitation Reactivity: H-Human R-Rat M-Mouse Mk-Monkey Dg-Dog Ch-Chicken Hm-Hamster Rb-Rabbit Sh-Sheep Pg-Pig Z-Zebrafish X-Xenopus C-Cow.