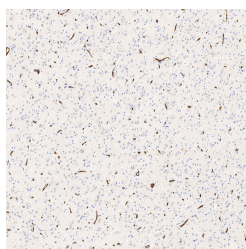


GLUT-1 Polyclonal Antibody

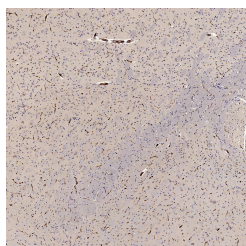
Catalog No.	E-AB-70090	Reactivity	H,M,R
Storage	Store at -20°C. Avoid freeze / thaw cycles.	Host	Rabbit
Applications	IHC	Isotype	IgG

Note: Centrifuge before opening to ensure complete recovery of vial contents.

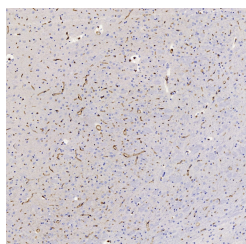
Images



Immunohistochemistry analysis of paraffin-embedded human brain using GLUT-1 Polyclonal Antibody at dilution of 1:300.



Immunohistochemistry analysis of paraffin-embedded mouse brain using GLUT-1 Polyclonal Antibody at dilution of 1:300.



Immunohistochemistry analysis of paraffin-embedded rat brain using GLUT-1 Polyclonal Antibody at dilution of 1:300.

Immunogen Information

Immunogen	KLH conjugated Synthetic peptide corresponding to Mouse GLUT1
Swissprot	P11166,P17809,P11167
Synonyms	SLC2A1, CSE, DYT17, DYT18, DYT9, EIG12, GLUT, GLUT-1, GLUT1, GLUT1DS, HTLVR, PED, SDCHCN, solute carrier family 2 member 1

Product Information

Buffer	PBS with 0.02% sodium azide, 1% protective protein and 50% glycerol, pH7.4
Purify	Affinity purification
Dilution	IHC 1:200-1:600

Background

GLUT1, also known as SLC2A1, is an ubiquitously expressed glucose transporter and responsible for the basal level of glucose uptake in most cell types. Human erythrocytes express the highest level of the GLUT1. Defects in SLC2A1 are the cause of GLUT1 deficiency syndrome type 1 and type 2. High expression of GLUT1 has been reported to be a reliable immunohistochemical marker for juvenile hemangiomas. GLUT1 protein may appear as two or more distinct forms among 43 kDa to 55 kDa due to the different glycosylation state. And the conversion of highly glycosylated form of GLUT1 to less glycosylated form has been reported to correlate to differentiation. (8263524,23302780)

For Research Use Only

Thank you for your recent purchase.
 If you would like to learn more about antibodies, please visit www.elabscience.com.

**Focus on your research
 Service for life science**

Applications: WB-Western Blot IHC-Immunohistochemistry IF-Immunofluorescence IP-Immunoprecipitation FC-Flow cytometry ChIP-Chromatin Immunoprecipitation Reactivity: H-Human R-Rat M-Mouse Mk-Monkey Dg-Dog Ch-Chicken Hm-Hamster Rb-Rabbit Sh-Sheep Pg-Pig Z-Zebrafish X-Xenopus C-Cow.