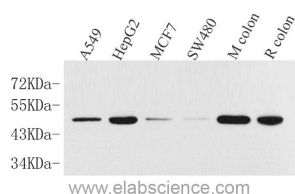


CK-18 Polyclonal Antibody

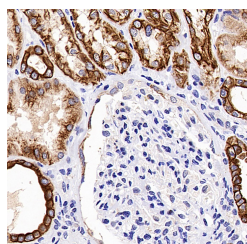
Catalog No.	E-AB-70095	Reactivity	H,M,R
Storage	Store at -20°C. Avoid freeze / thaw cycles.	Host	Rabbit
Applications	WB,IHC	Isotype	IgG

Note: Centrifuge before opening to ensure complete recovery of vial contents.

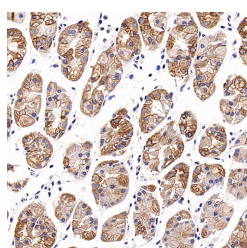
Images



Western Blot analysis of various samples using CK-18 Polyclonal Antibody at dilution of 1:1000.



Immunohistochemistry analysis of paraffin-embedded human kidney using CK-18 Polyclonal Antibody at dilution of 1:500.



Immunohistochemistry analysis of paraffin-embedded human stomach using CK-18 Polyclonal Antibody at dilution of 1:500.

Immunogen Information

Immunogen	KLH conjugated Synthetic peptide corresponding to Mouse Cytokeratin 18
Swissprot	P05783,P05784,Q5BJY9
Synonyms	KRT18,CK-18,CK18,CYK18,K18,keratin 18

Product Information

Calculated MW	48kDa
Observed MW	48kDa
Buffer	PBS with 0.02% sodium azide, 1% protective protein and 50% glycerol, pH7.4
Purify	Affinity purification
Dilution	WB 1:500-1:2000, IHC 1:200-1:800

Background

Cytokeratin 18 (CK18) has a molecular weight of 45 KDa, which is a low molecular weight type A cytokeratin. It is a marker of simple epithelium, including glandular epithelium. The stratified squamous epithelium is generally negative. CK18 is mainly used in the diagnosis of adenocarcinoma.

For Research Use Only

Thank you for your recent purchase.
 If you would like to learn more about antibodies, please visit www.elabscience.com.

**Focus on your research
 Service for life science**

Applications:WB-Western Blot IHC-Immunohistochemistry IF-Immunofluorescence IP-Immunoprecipitation FC-Flow cytometry ChIP-Chromatin Immunoprecipitation Reactivity: H-Human R-Rat M-Mouse Mk-Monkey Dg-Dog Ch-Chicken Hm-Hamster Rb-Rabbit Sh-Sheep Pg-Pig Z-Zebrafish X-Xenopus C-Cow.