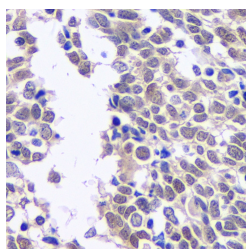


CREB1 Polyclonal Antibody

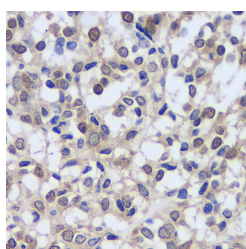
Catalog No.	E-AB-70099	Reactivity	H
Storage	Store at -20°C. Avoid freeze / thaw cycles.	Host	Rabbit
Applications	IHC	Isotype	IgG

Note: Centrifuge before opening to ensure complete recovery of vial contents.

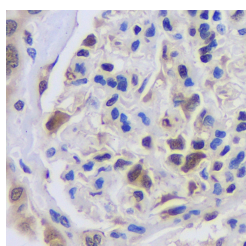
Images



Immunohistochemistry analysis of paraffin-embedded human lung cancer using CREB1 Polyclonal Antibody at dilution of 1:200.



Immunohistochemistry analysis of paraffin-embedded human liver cancer using CREB1 Polyclonal Antibody at dilution of 1:200.



Immunohistochemistry analysis of paraffin-embedded human kidney using CREB1 Polyclonal Antibody at dilution of 1:200.

Immunogen Information

Immunogen	KLH conjugated Synthetic peptide corresponding to Mouse CREB1
Swissprot	P16220,Q01147,P15337
Synonyms	CREB1, CREB, CREB-1, cAMP responsive element binding protein 1

Product Information

Buffer	PBS with 0.02% sodium azide, 1% protective protein and 50% glycerol, pH7.4
Purify	Affinity purification
Dilution	IHC 1:200-1:800

Background

This gene encodes a transcription factor that is a member of the leucine zipper family of DNA binding proteins. This protein binds as a homodimer to the cAMP-responsive element, an octameric palindrome. The protein is phosphorylated by several protein kinases, and induces transcription of genes in response to hormonal stimulation of the cAMP pathway. Alternate splicing of this gene results in two transcript variants encoding different isoforms.

For Research Use Only

Thank you for your recent purchase.
 If you would like to learn more about antibodies, please visit www.elabscience.com.

**Focus on your research
 Service for life science**

Applications: WB-Western Blot IHC-Immunohistochemistry IF-Immunofluorescence IP-Immunoprecipitation FC-Flow cytometry ChIP-Chromatin Immunoprecipitation Reactivity: H-Human R-Rat M-Mouse Mk-Monkey Dg-Dog Ch-Chicken Hm-Hamster Rb-Rabbit Sh-Sheep Pg-Pig Z-Zebrafish X-Xenopus C-Cow.