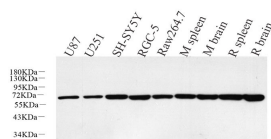


## HSP60 Polyclonal Antibody

|                     |   |                   |        |
|---------------------|---|-------------------|--------|
| <b>Catalog No.</b>  | E-AB-70103                                  | <b>Reactivity</b> | H,M,R  |
| <b>Storage</b>      | Store at -20°C. Avoid freeze / thaw cycles. | <b>Host</b>       | Rabbit |
| <b>Applications</b> | WB,IHC                                      | <b>Isotype</b>    | IgG    |

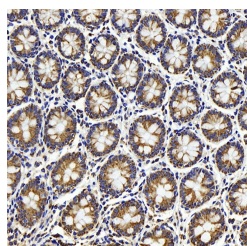
**Note:** Centrifuge before opening to ensure complete recovery of vial contents.

### Images

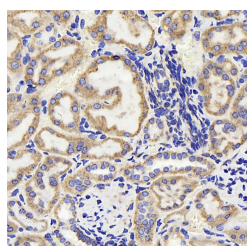


www.elabscience.com

Western Blot analysis of various samples using HSP60 Polyclonal Antibody at dilution of 1:5000.



Immunohistochemistry analysis of paraffin-embedded human colon using HSP60 Polyclonal Antibody at dilution of 1:500.



Immunohistochemistry analysis of paraffin-embedded Mouse kidney using HSP60 Polyclonal Antibody at dilution of 1:500.

### Immunogen Information

|                  |  |
|------------------|--|
| <b>Immunogen</b> | KLH conjugated Synthetic peptide corresponding to Mouse HSP60                              |
| <b>Swissprot</b> | P10809,P63039,P63038   |
| <b>Synonyms</b>  | HSP60,HSP-60,HuCHA60 ,CPN60,60 KDa Chaperonin,P60 Lymphocyte Protein,Heat Shock Protein 60 |

### Product Information

|                      |  |
|----------------------|--|
| <b>Calculated MW</b> | 60kDa  |
| <b>Observed MW</b>   | 60kDa  |
| <b>Buffer</b>        | PBS with 0.02% sodium azide, 1% protective protein and 50% glycerol, pH7.4 |
| <b>Purify</b>        | Affinity purification  |
| <b>Dilution</b>      | WB 1:2000-1:5000, IHC 1:300-1:800  |

### Background

HSPD1, also known as HSP60, belongs to the chaperonin family and acts as a chaperone to enhance cell survival under physiological stresses. Hsp60 has been shown to be connected with many aspects of cell functions such as protein folding and assembling of polypeptide chains in mitochondria. Recently it has been reported that HSP60 is associated with apoptosis or inhibition of cancer cell growth. (21822415)

#### For Research Use Only

Thank you for your recent purchase.  
 If you would like to learn more about antibodies, please visit [www.elabscience.com](http://www.elabscience.com).

**Focus on your research  
 Service for life science**

Applications: WB-Western Blot IHC-Immunohistochemistry IF-Immunofluorescence IP-Immunoprecipitation FC-Flow cytometry ChIP-Chromatin Immunoprecipitation Reactivity: H-Human R-Rat M-Mouse Mk-Monkey Dg-Dog Ch-Chicken Hm-Hamster Rb-Rabbit Sh-Sheep Pg-Pig Z-Zebrafish X-Xenopus C-Cow.