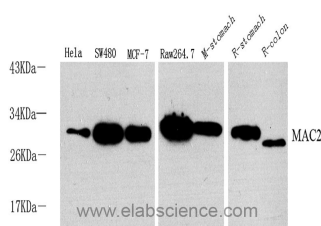


## Galectin 3 Polyclonal Antibody

<b>Catalog No.</b>	E-AB-70106	<b>Reactivity</b>	H,M,R
<b>Storage</b>	Store at -20°C. Avoid freeze / thaw cycles.	<b>Host</b>	Rabbit
<b>Applications</b>	WB	<b>Isotype</b>	IgG

**Note:** Centrifuge before opening to ensure complete recovery of vial contents.

### Images



Western Blot analysis of various samples using Galectin 3 Polyclonal Antibody at dilution of 1:1000.

### Immunogen Information

<b>Immunogen</b>	Recombinant protein corresponding to Mouse Mac2
<b>Swissprot</b>	P17931,P08699,P16110
<b>Synonyms</b>	LGALS3, CBP35, GAL3, GALBP, GALIG, L31, LGALS2, MAC2, lectin, galactoside binding soluble 3, galectin 3

### Product Information

<b>Calculated MW</b>	30kDa
<b>Observed MW</b>	30kDa
<b>Buffer</b>	PBS with 0.02% sodium azide, 1% protective protein and 50% glycerol, pH7.4
<b>Purify</b>	Affinity purification
<b>Dilution</b>	WB 1:500-1:2000

### Background

Galectins are a family of animal lectins defined by shared characteristic amino-acid sequences and affinity for  $\beta$ -galactose-containing oligosaccharides. Galectin-3 contains one carbohydrate recognition domain (CRD) and a proline- and glycine-rich N-terminal domain through which is able to form oligomers. Galectin-3 is widely expressed in many normal tissues and a variety of tumors. It is found intracellularly in nucleus and cytoplasm or secreted outside of cell, being present on the cell surface or in the extracellular space. Galectin-3 is involved in various biological processes including cell growth, adhesion, differentiation, apoptosis, angiogenesis, immune response, neoplastic transformation and metastasis.

#### For Research Use Only

Thank you for your recent purchase.  
 If you would like to learn more about antibodies, please visit [www.elabscience.com](http://www.elabscience.com).

**Focus on your research  
 Service for life science**

Applications: WB-Western Blot IHC-Immunohistochemistry IF-Immunofluorescence IP-Immunoprecipitation FC-Flow cytometry ChIP-Chromatin Immunoprecipitation Reactivity: H-Human R-Rat M-Mouse Mk-Monkey Dg-Dog Ch-Chicken Hm-Hamster Rb-Rabbit Sh-Sheep Pg-Pig Z-Zebrafish X-Xenopus C-Cow.