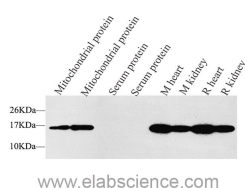


## COX4I1 Polyclonal Antibody

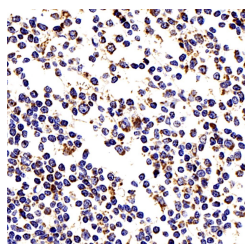
<b>Catalog No.</b>	E-AB-70109	<b>Reactivity</b>	H,M,R
<b>Storage</b>	Store at -20°C. Avoid freeze / thaw cycles.	<b>Host</b>	Rabbit
<b>Applications</b>	WB,IHC,IF	<b>Isotype</b>	IgG

**Note:** Centrifuge before opening to ensure complete recovery of vial contents.

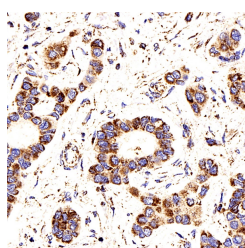
### Images



Western Blot analysis of various samples using COX4I1 Polyclonal Antibody at dilution of 1:1500.



Immunohistochemistry analysis of paraffin-embedded human tonsil using COX4I1 Polyclonal Antibody at dilution of 1:200.



Immunohistochemistry analysis of paraffin-embedded human liver cancer using COX4I1 Polyclonal Antibody at dilution of 1:200.

### Immunogen Information

<b>Immunogen</b>	Recombinant protein corresponding to Mouse COX IV
<b>Swissprot</b>	P13073,P19783,P10888
<b>Synonyms</b>	COX4I1,COX4,COX4-1,COXIV,COXIV-1, COXIV-1, cytochrome c oxidase subunit 4I1

### Product Information

<b>Calculated MW</b>	16kDa
<b>Observed MW</b>	16kDa
<b>Buffer</b>	PBS with 0.02% sodium azide, 1% protective protein and 50% glycerol, pH7.4
<b>Purify</b>	Affinity purification
<b>Dilution</b>	WB 1:500-1:2000, IHC 1:200-1:800, IF 1:200-1:500

### Background

COX4I1, also named as COX4 and COXIV-1, belongs to the cytochrome c oxidase IV family. It is one of the nuclear-coded polypeptide chains of cytochrome c oxidase, the terminal oxidase in mitochondrial electron transport. COX4I1 is a marker for mitochondria. It has two isoforms (isoform 1 and 2). Isoform 1 (COX4I1) is ubiquitously expressed and isoform 2 is highly expressed in lung tissues. COX4I1 is commonly used as a loading control. This antibody is specific to COX4I1 and does not cross react with COX4I2.

### For Research Use Only

Thank you for your recent purchase.  
 If you would like to learn more about antibodies, please visit [www.elabscience.com](http://www.elabscience.com).

**Focus on your research  
 Service for life science**

Applications: WB-Western Blot IHC-Immunohistochemistry IF-Immunofluorescence IP-Immunoprecipitation FC-Flow cytometry ChIP-Chromatin Immunoprecipitation Reactivity: H-Human R-Rat M-Mouse Mk-Monkey Dg-Dog Ch-Chicken Hm-Hamster Rb-Rabbit Sh-Sheep Pg-Pig Z-Zebrafish X-Xenopus C-Cow.