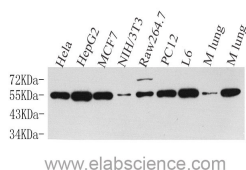


Cyclin B1 Polyclonal Antibody

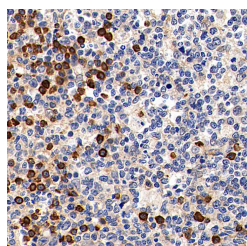
Catalog No.	E-AB-70114	Reactivity	H,M,R
Storage	Store at -20°C. Avoid freeze / thaw cycles.	Host	Rabbit
Applications	WB,IHC,IF	Isotype	IgG

Note: Centrifuge before opening to ensure complete recovery of vial contents.

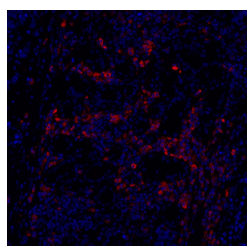
Images



Western Blot analysis of various samples using Cyclin B1 Polyclonal Antibody at dilution of 1:500.



Immunohistochemistry analysis of paraffin-embedded Human tonsil using Cyclin B1 Polyclonal Antibody at dilution of 1:300.



Immunofluorescence analysis of paraffin-embedded Human lung cancer using Cyclin B1 Polyclonal Antibody at dilution of 1:100.

Immunogen Information

Immunogen	KLH conjugated Synthetic peptide corresponding to Mouse Cyclin B1
Swissprot	P14635,P24860,P30277
Synonyms	CCNB1, CCNB, cyclin B1,

Product Information

Calculated MW	55kDa
Observed MW	55kDa
Buffer	PBS with 0.02% sodium azide, 1% protective protein and 50% glycerol, pH7.4
Purify	Affinity purification
Dilution	WB 1:500-1:2000, IHC 1:300-1:500, IF 1:100-1:300

Background

G2/mitotic-specific cyclin-B1 is a protein that in humans is encoded by the CCNB1 gene. The protein encoded by this gene is a regulatory protein involved in mitosis. The gene product complexes with p34(cdc2) to form the maturation-promoting factor (MPF). Two alternative transcripts have been found, a constitutively expressed transcript and a cell cycle-regulated transcript, that is expressed predominantly during G2/M phase. The different transcripts result from the use of alternate transcription initiation sites.

For Research Use Only

Thank you for your recent purchase.
 If you would like to learn more about antibodies, please visit www.elabscience.com.

**Focus on your research
 Service for life science**

Applications:WB-Western Blot IHC-Immunohistochemistry IF-Immunofluorescence IP-Immunoprecipitation FC-Flow cytometry ChIP-Chromatin Immunoprecipitation Reactivity: H-Human R-Rat M-Mouse Mk-Monkey Dg-Dog Ch-Chicken Hm-Hamster Rb-Rabbit Sh-Sheep Pg-Pig Z-Zebrafish X-Xenopus C-Cow.