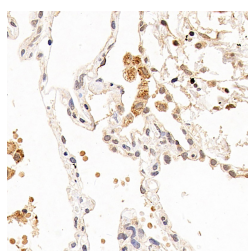


CXCR7 Polyclonal Antibody

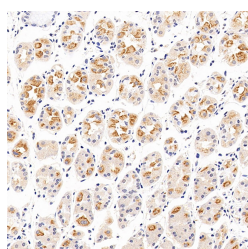
Catalog No.	E-AB-70115	Reactivity	H,M,R
Storage	Store at -20°C. Avoid freeze / thaw cycles.	Host	Rabbit
Applications	IHC	Isotype	IgG

Note: Centrifuge before opening to ensure complete recovery of vial contents.

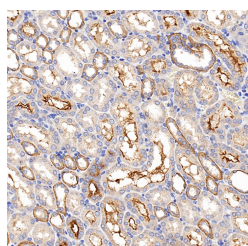
Images



Immunohistochemistry analysis of paraffin-embedded human lung using CXCR7 Polyclonal Antibody at dilution of 1:100.



Immunohistochemistry analysis of paraffin-embedded human stomach using CXCR7 Polyclonal Antibody at dilution of 1:100.



Immunohistochemistry analysis of paraffin-embedded mouse kidney using CXCR7 Polyclonal Antibody at dilution of 1:200.

Immunogen Information

Immunogen	KLH conjugated Synthetic peptide corresponding to Mouse CXCR7
Swissprot	P25106,P56485,O89039
Synonyms	ACKR3, CMKOR1, CXC-R7, CXCR-7, CXCR7, GPR159, RDC-1, RDC1, atypical chemokine receptor 3

Product Information

Buffer	PBS with 0.02% sodium azide, 1% protective protein and 50% glycerol, pH7.4
Purify	Affinity purification
Dilution	IHC 1:100-1:200

Background

CXCR7 (C-X-C chemokine receptor type 7), also known as RDC1, is a member of the G-protein coupled receptor family. CXCR7 can bind the chemokines CXCL11 and CXCL12 with high affinity, and it also acts as coreceptor with CXCR4 for a restricted number of HIV isolates. Expression of CXCR7 has been associated with cardiac development as well as with tumor growth and progression.

For Research Use Only

Thank you for your recent purchase.
 If you would like to learn more about antibodies, please visit www.elabscience.com.

**Focus on your research
 Service for life science**

Applications: WB-Western Blot IHC-Immunohistochemistry IF-Immunofluorescence IP-Immunoprecipitation FC-Flow cytometry ChIP-Chromatin Immunoprecipitation Reactivity: H-Human R-Rat M-Mouse Mk-Monkey Dg-Dog Ch-Chicken Hm-Hamster Rb-Rabbit Sh-Sheep Pg-Pig Z-Zebrafish X-Xenopus C-Cow.