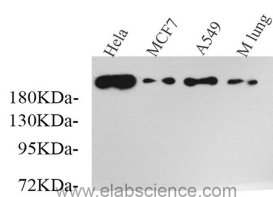


SMARCA4 Polyclonal Antibody

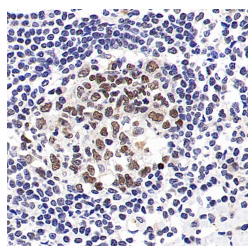
| | | | |
|---------------------|---|-------------------|--------|
| Catalog No. | E-AB-70117 | Reactivity | H,M,R |
| Storage | Store at -20°C. Avoid freeze / thaw cycles. | Host | Rabbit |
| Applications | WB,IHC | Isotype | IgG |

Note: Centrifuge before opening to ensure complete recovery of vial contents.

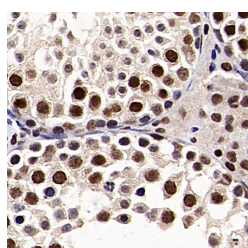
Images



Western Blot analysis of various samples using SMARCA4 Polyclonal Antibody at dilution of 1:750.



Immunohistochemistry analysis of paraffin-embedded Human tonsil using SMARCA4 Polyclonal Antibody at dilution of 1:300.



Immunohistochemistry analysis of paraffin-embedded mouse testis using SMARCA4 Polyclonal Antibody at dilution of 1:300.

Immunogen Information

| | |
|------------------|---|
| Immunogen | KLH conjugated Synthetic peptide corresponding to Mouse BRG1 |
| Swissprot | P51532,Q3TKT4,Q8K1P7 |
| Synonyms | SMARCA4, BAF190, BAF190A, BRG1, MRD16, RTPS2, SNF2, SNF2L4, SNF2LB, SWI2, hSNF2b, CSS4,matrix associated, subfamily a, member 4 |

Product Information

| | |
|----------------------|--|
| Calculated MW | 185kDa |
| Observed MW | 185kDa |
| Buffer | PBS with 0.02% sodium azide, 1% protective protein and 50% glycerol, pH7.4 |
| Purify | Affinity purification |
| Dilution | WB 1:500-1:2000, IHC 1:200-1:600 |

Background

The protein encoded by this gene is a member of the SWI/SNF family of proteins and is similar to the brahma protein of *Drosophila*. Members of this family have helicase and ATPase activities and are thought to regulate transcription of certain genes by altering the chromatin structure around those genes. The encoded protein is part of the large ATP-dependent chromatin remodeling complex SNF/SWI, which is required for transcriptional activation of genes normally repressed by chromatin. In addition, this protein can bind BRCA1, as well as regulate the expression of the tumorigenic protein CD44. Mutations in this gene cause rhabdoid tumor predisposition syndrome type 2. Multiple transcript variants encoding different isoforms have been found for this gene.

For Research Use Only

Thank you for your recent purchase.
 If you would like to learn more about antibodies, please visit www.elabscience.com.

Focus on your research
Service for life science

Applications:WB-Western Blot IHC-Immunohistochemistry IF-Immunofluorescence IP-Immunoprecipitation FC-Flow cytometry ChIP-Chromatin Immunoprecipitation Reactivity: H-Human R-Rat M-Mouse Mk-Monkey Dg-Dog Ch-Chicken Hm-Hamster Rb-Rabbit Sh-Sheep Pg-Pig Z-Zebrafish X-Xenopus C-Cow.