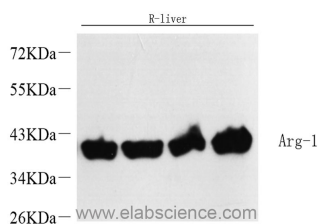


ARG1 Polyclonal Antibody

Catalog No.	E-AB-70142	Reactivity	H,M,R
Storage	Store at -20°C. Avoid freeze / thaw cycles.	Host	Rabbit
Applications	WB	Isotype	IgG

Note: Centrifuge before opening to ensure complete recovery of vial contents.

Images



Western Blot analysis of various samples using ARG1 Polyclonal Antibody at dilution of 1:10000.

Immunogen Information

Immunogen	Recombinant protein corresponding to Mouse Arginase-1
Swissprot	P05089,P07824,Q61176
Synonyms	Arg1,Arg-1,Arginase 1 ,Liver-Type Arginase,Arginase, Liver,Type I Arginase,Arginase-1

Product Information

Calculated MW	35kDa
Observed MW	40kDa
Buffer	PBS with 0.02% sodium azide, 1% protective protein and 50% glycerol, pH7.4
Purify	Affinity purification
Dilution	WB 1:2000-1:10000

Background

Liver arginase(Arginase-1) belongs to the arginase family. Hepatic arginase 1 is closely associated with alternative macrophage activation(PMID:12098359) and Arg1 has been shown to protect motor neurons from trophic factor deprivation and allow sensory neurons to overcome neurite outgrowth inhibition by myelin proteins(PMID:20071539).It can exist as a homotrimer(PMID:16141327) and it has 3 isoforms produced by alternative splicing.Defects in ARG1 are the cause of argininemia (ARGIN).

For Research Use Only

Thank you for your recent purchase.
 If you would like to learn more about antibodies, please visit www.elabscience.com.

**Focus on your research
 Service for life science**

Applications:WB-Western Blot IHC-Immunohistochemistry IF-Immunofluorescence IP-Immunoprecipitation FC-Flow cytometry ChIP-Chromatin Immunoprecipitation Reactivity: H-Human R-Rat M-Mouse Mk-Monkey Dg-Dog Ch-Chicken Hm-Hamster Rb-Rabbit Sh-Sheep Pg-Pig Z-Zebrafish X-Xenopus C-Cow.