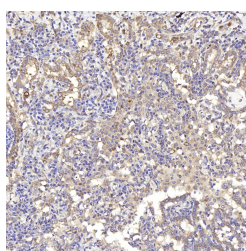


IKK alpha Polyclonal Antibody

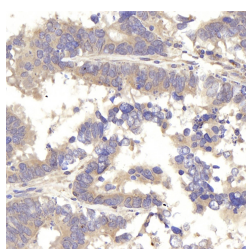
Catalog No.	E-AB-70151	Reactivity	H
Storage	Store at -20°C. Avoid freeze / thaw cycles.	Host	Rabbit
Applications	IHC	Isotype	IgG

Note: Centrifuge before opening to ensure complete recovery of vial contents.

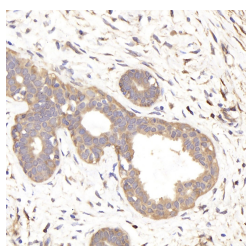
Images



Immunohistochemistry analysis of paraffin-embedded human lung cancer using IKK alpha Polyclonal Antibody at dilution of 1:300.



Immunohistochemistry analysis of paraffin-embedded human colon cancer using IKK alpha Polyclonal Antibody at dilution of 1:300.



Immunohistochemistry analysis of paraffin-embedded human breast cancer using IKK alpha Polyclonal Antibody at dilution of 1:300.

Immunogen Information

Immunogen	KLH conjugated Synthetic peptide corresponding to Mouse IKK α
Swissprot	O15111,Q60680
Synonyms	CHUK, IKBKA, IKK-alpha, IKK1, IKKA, NFKB1A, TCF16, conservedhelix-loop-helix ubiquitous kinase

Product Information

Buffer	PBS with 0.02% sodium azide, 1% protective protein and 50% glycerol, pH7.4
Purify	Affinity purification
Dilution	IHC 1:200-1:600

Background

This gene encodes a member of the serine/threonine protein kinase family. The encoded protein, a component of a cytokine-activated protein complex that is an inhibitor of the essential transcription factor NF-kappa-B complex, phosphorylates sites that trigger the degradation of the inhibitor via the ubiquitination pathway, thereby activating the transcription factor.

For Research Use Only

Thank you for your recent purchase.
 If you would like to learn more about antibodies, please visit www.elabscience.com.

**Focus on your research
 Service for life science**

Applications: WB-Western Blot IHC-Immunohistochemistry IF-Immunofluorescence IP-Immunoprecipitation FC-Flow cytometry ChIP-Chromatin Immunoprecipitation Reactivity: H-Human R-Rat M-Mouse Mk-Monkey Dg-Dog Ch-Chicken Hm-Hamster Rb-Rabbit Sh-Sheep Pg-Pig Z-Zebrafish X-Xenopus C-Cow.