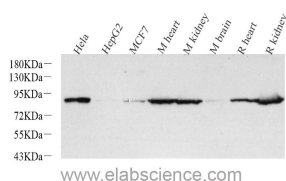


Glucocorticoid Receptor Polyclonal Antibody

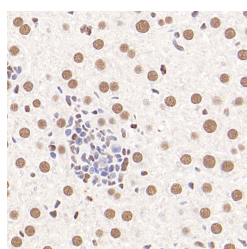
Catalog No.	E-AB-70157	Reactivity	H,M,R
Storage	Store at -20°C. Avoid freeze / thaw cycles.	Host	Rabbit
Applications	WB,IHC	Isotype	IgG

Note: Centrifuge before opening to ensure complete recovery of vial contents.

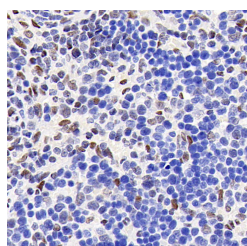
Images



Western Blot analysis of various samples using Glucocorticoid Receptor Polyclonal Antibody at dilution of 1:1000.



Immunohistochemistry analysis of paraffin-embedded mouse liver using Glucocorticoid Receptor Polyclonal Antibody at dilution of 1:1000.



Immunohistochemistry analysis of paraffin-embedded rat spleen using Glucocorticoid Receptor Polyclonal Antibody at dilution of 1:1000.

Immunogen Information

Immunogen	Recombinant protein corresponding to Mouse Glucocorticoid receptor
Swissprot	P04150,P06536,P06537
Synonyms	NR3C1, GCCR, GCR, GCRST, GR, GRL, nuclear receptor subfamily 3 group C member 1, Glucocorticoid Receptor

Product Information

Calculated MW	91kDa
Observed MW	91kDa
Buffer	PBS with 0.02% sodium azide, 1% protective protein and 50% glycerol, pH7.4
Purify	Affinity purification
Dilution	WB 1:500-1:1000, IHC 1:500-1:1000

Background

This gene encodes glucocorticoid receptor, which can function both as a transcription factor that binds to glucocorticoid response elements in the promoters of glucocorticoid responsive genes to activate their transcription, and as a regulator of other transcription factors. This receptor is typically found in the cytoplasm, but upon ligand binding, is transported into the nucleus. It is involved in inflammatory responses, cellular proliferation, and differentiation in target tissues. Mutations in this gene are associated with generalized glucocorticoid resistance. Alternative splicing of this gene results in transcript variants encoding either the same or different isoforms.

For Research Use Only

Thank you for your recent purchase.
 If you would like to learn more about antibodies, please visit www.elabscience.com.

Focus on your research
Service for life science

Applications: WB-Western Blot IHC-Immunohistochemistry IF-Immunofluorescence IP-Immunoprecipitation FC-Flow cytometry ChIP-Chromatin Immunoprecipitation Reactivity: H-Human R-Rat M-Mouse Mk-Monkey Dg-Dog Ch-Chicken Hm-Hamster Rb-Rabbit Sh-Sheep Pg-Pig Z-Zebrafish X-Xenopus C-Cow.