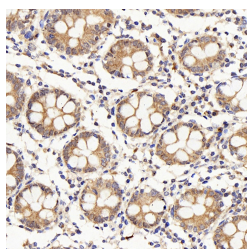


IL22RA1 Polyclonal Antibody

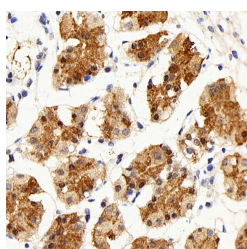
Catalog No.	E-AB-70163	Reactivity	H,M,R
Storage	Store at -20°C. Avoid freeze / thaw cycles.	Host	Rabbit
Applications	IHC	Isotype	IgG

Note: Centrifuge before opening to ensure complete recovery of vial contents.

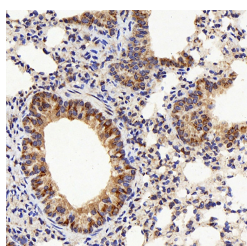
Images



Immunohistochemistry analysis of paraffin-embedded human colon using IL22RA1 Polyclonal Antibody at dilution of 1:200.



Immunohistochemistry analysis of paraffin-embedded human stomach using IL22RA1 Polyclonal Antibody at dilution of 1:200.



Immunohistochemistry analysis of paraffin-embedded mouse lung using IL22RA1 Polyclonal Antibody at dilution of 1:200.

Immunogen Information

Immunogen	KLH conjugated Synthetic peptide corresponding to Mouse IL22RA1
Swissprot	Q8N6P7,Q80XZ4
Synonyms	IL22RA1, CRF2-9, IL22R, IL22R1, interleukin 22 receptor subunit alpha 1

Product Information

Buffer	PBS with 0.02% sodium azide, 1% protective protein and 50% glycerol, pH7.4
Purify	Affinity purification
Dilution	IHC 1:200

Background

The protein encoded by this gene belongs to the class II cytokine receptor family, and has been shown to be a receptor for interleukin 22 (IL22). IL22 receptor is a protein complex that consists of this protein and interleukin 10 receptor, beta (IL10BR/CRFB4), a subunit also shared by the receptor complex for interleukin 10 (IL10). This gene and interleukin 28 receptor, alpha (IL28RA) form a cytokine receptor gene cluster in the chromosomal region 1p36.

For Research Use Only

Thank you for your recent purchase.
 If you would like to learn more about antibodies, please visit www.elabscience.com.

**Focus on your research
 Service for life science**

Applications:WB-Western Blot IHC-Immunohistochemistry IF-Immunofluorescence IP-Immunoprecipitation FC-Flow cytometry ChIP-Chromatin Immunoprecipitation Reactivity: H-Human R-Rat M-Mouse Mk-Monkey Dg-Dog Ch-Chicken Hm-Hamster Rb-Rabbit Sh-Sheep Pg-Pig Z-Zebrafish X-Xenopus C-Cow.