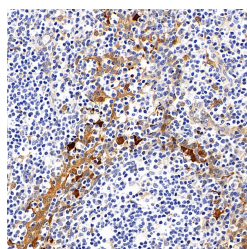


Galectin 3 Monoclonal Antibody

Catalog No.	E-AB-70177	Reactivity	H
Storage	Store at -20°C. Avoid freeze / thaw cycles.	Host	Mouse
Applications	IHC	Isotype	IgG

Note: Centrifuge before opening to ensure complete recovery of vial contents.

Images



Immunohistochemistry analysis of paraffin-embedded human tonsil tissue using Galectin 3 Monoclonal Antibody at dilution of 1:400.

Immunogen Information

Immunogen	Recombinant protein corresponding to Mouse Mac2
Swissprot	P17931,P08699,P16110
Synonyms	35 kDa lectin,GALBP,L31,Laminin-binding protein,Lectin L-29,Lectin,galactose binding,soluble 3

Product Information

Buffer	PBS with 0.02% sodium azide, 1% protective protein and 50% glycerol, pH7.4
Purify	Affinity purification
Clone No.	3G7F11
Dilution	IHC 1:300-1:1000

Background

Galectins are a family of animal lectins defined by shared characteristic amino-acid sequences and affinity for β -galactose-containing oligosaccharides . Galectin-3 contains one carbohydrate recognition domain (CRD) and a proline- and glycine-rich N-terminal domain through which is able to form oligomers. Galectin-3 is widely expressed in many normal tissues and a variety of tumors. It is found intracellularly in nucleus and cytoplasm or secreted outside of cell,being present on the cell surface or in the extracellular space . Galectin-3 is involved in various biological processes including cell growth,adhesion,differentiation,apoptosis,angiogenesis,immune response,neoplastic transformation and metastasis .

For Research Use Only

Thank you for your recent purchase.
 If you would like to learn more about antibodies,please visit www.elabscience.com.

**Focus on your research
 Service for life science**

Applications:WB-Western Blot IHC-Immunohistochemistry IF-Immunofluorescence IP-Immunoprecipitation FC-Flow cytometry ChIP-Chromatin Immunoprecipitation Reactivity: H-Human R-Rat M-Mouse Mk-Monkey Dg-Dog Ch-Chicken Hm-Hamster Rb-Rabbit Sh-Sheep Pg-Pig Z-Zebrafish X-Xenopus C-Cow.