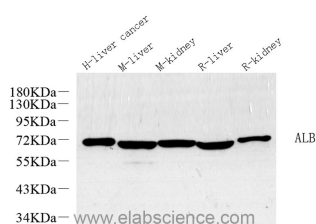


ALB Polyclonal Antibody

Catalog No.	E-AB-70182	Reactivity	H,M,R
Storage	Store at -20°C. Avoid freeze / thaw cycles.	Host	Rabbit
Applications	WB	Isotype	IgG

Note: Centrifuge before opening to ensure complete recovery of vial contents.

Images



Western Blot analysis of various samples using ALB Polyclonal Antibody at dilution of 1:1000.

Immunogen Information

Immunogen	KLH conjugated Synthetic peptide corresponding to Mouse ALB
Swissprot	P02768,P07724,P02770
Synonyms	ALB, blood albumin, ANALBA, FDAH, PRO0883, PRO0903, PRO1341, albumin, Serum albumin, HSA

Product Information

Calculated MW	69kDa
Observed MW	69kDa
Buffer	PBS with 0.02% sodium azide, 1% protective protein and 50% glycerol, pH7.4
Purify	Affinity purification
Dilution	WB 1:500-1:2000

Background

Albumin is a soluble, monomeric protein which comprises about one-half of the blood serum protein. Albumin functions primarily as a carrier protein for steroids, fatty acids, and thyroid hormones and plays a role in stabilizing extracellular fluid volume. Albumin is a globular unglycosylated serum protein of molecular weight 65,000. Albumin is synthesized in the liver as prealbumin which has an N-terminal peptide that is removed before the nascent protein is released from the rough endoplasmic reticulum. The product, proalbumin, is in turn cleaved in the Golgi vesicles to produce the secreted albumin.

For Research Use Only

Thank you for your recent purchase.
 If you would like to learn more about antibodies, please visit www.elabscience.com.

**Focus on your research
 Service for life science**

Applications:WB-Western Blot IHC-Immunohistochemistry IF-Immunofluorescence IP-Immunoprecipitation FC-Flow cytometry ChIP-Chromatin Immunoprecipitation Reactivity: H-Human R-Rat M-Mouse Mk-Monkey Dg-Dog Ch-Chicken Hm-Hamster Rb-Rabbit Sh-Sheep Pg-Pig Z-Zebrafish X-Xenopus C-Cow.