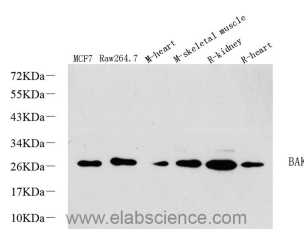


BAK1 Polyclonal Antibody

Catalog No.	E-AB-70192	Reactivity	H,M,R
Storage	Store at -20°C. Avoid freeze / thaw cycles.	Host	Rabbit
Applications	WB	Isotype	IgG

Note: Centrifuge before opening to ensure complete recovery of vial contents.

Images



Western Blot analysis of various samples using BAK1 Polyclonal Antibody at dilution of 1:1000.

Immunogen Information

Immunogen	KLH conjugated Synthetic peptide corresponding to Mouse BAK
Swissprot	Q16611,O08734
Synonyms	BAK,BAK1,BCL2L7,CDN1,Apoptosis Regulator Bak

Product Information

Calculated MW	25kDa
Observed MW	25kDa
Buffer	PBS with 0.02% sodium azide, 1% protective protein and 50% glycerol, pH7.4
Purify	Affinity purification
Dilution	WB 1:500-1:2000

Background

The protein encoded by this gene belongs to the BCL2 protein family. BCL2 family members form oligomers or heterodimers and act as anti- or pro-apoptotic regulators that are involved in a wide variety of cellular activities. This protein localizes to mitochondria, and functions to induce apoptosis. It interacts with and accelerates the opening of the mitochondrial voltage-dependent anion channel, which leads to a loss in membrane potential and the release of cytochrome c. This protein also interacts with the tumor suppressor P53 after exposure to cell stress.

For Research Use Only

Thank you for your recent purchase.
 If you would like to learn more about antibodies, please visit www.elabscience.com.

**Focus on your research
 Service for life science**

Applications:WB-Western Blot IHC-Immunohistochemistry IF-Immunofluorescence IP-Immunoprecipitation FC-Flow cytometry ChIP-Chromatin Immunoprecipitation Reactivity: H-Human R-Rat M-Mouse Mk-Monkey Dg-Dog Ch-Chicken Hm-Hamster Rb-Rabbit Sh-Sheep Pg-Pig Z-Zebrafish X-Xenopus C-Cow.