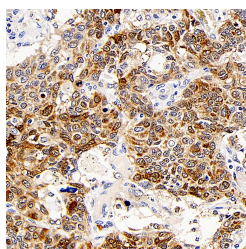


CD107b Polyclonal Antibody

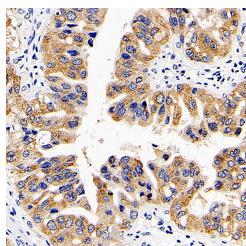
Catalog No.	E-AB-70198	Reactivity	H,M,R
Storage	Store at -20°C. Avoid freeze / thaw cycles.	Host	Rabbit
Applications	IHC	Isotype	IgG

Note: Centrifuge before opening to ensure complete recovery of vial contents.

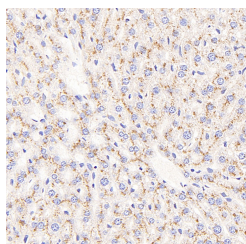
Images



Immunohistochemistry analysis of paraffin-embedded human lung cancer using CD107b Polyclonal Antibody at dilution of 1:300.



Immunohistochemistry analysis of paraffin-embedded human liver cancer using CD107b Polyclonal Antibody at dilution of 1:300.



Immunohistochemistry analysis of paraffin-embedded mouse liver using CD107b Polyclonal Antibody at dilution of 1:400.

Immunogen Information

Immunogen	KLH conjugated Synthetic peptide corresponding to Mouse LAMP2
Swissprot	P13473,P17047,P17046
Synonyms	LAMP2, CD107b, LAMP-2, LAMPB, LGP110, lysosomal associated membrane protein 2, LGP-96

Product Information

Buffer	PBS with 0.02% sodium azide, 1% protective protein and 50% glycerol, pH7.4
Purify	Affinity purification
Dilution	IHC 1:200-1:800

Background

Lysosomal-associated membrane protein 2 (LAMP2,synonyms: LAMPB,CD107b) is a member of a family of membrane glycoproteins. This glycoprotein provides selectins with carbohydrate ligands. LAMP2 may plays a role in tumor cell metastasis. It may also functions in the protection,maintenance,and adhesion of the lysosome. Prior to posttranslational modification,LAMP2 is a ~45 kDa polypeptide. Mature,functional LAMP2 is extensively glycosylated with a variety of different N linked and O linked oligosaccharides.

For Research Use Only

Thank you for your recent purchase.
 If you would like to learn more about antibodies,please visit www.elabscience.com.

**Focus on your research
 Service for life science**

Applications:WB-Western Blot IHC-Immunohistochemistry IF-Immunofluorescence IP-Immunoprecipitation FC-Flow cytometry ChIP-Chromatin Immunoprecipitation Reactivity: H-Human R-Rat M-Mouse Mk-Monkey Dg-Dog Ch-Chicken Hm-Hamster Rb-Rabbit Sh-Sheep Pg-Pig Z-Zebrafish X-Xenopus C-Cow.