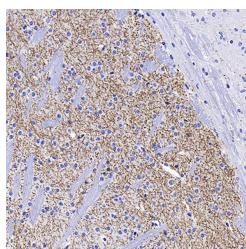


## TH Monoclonal Antibody

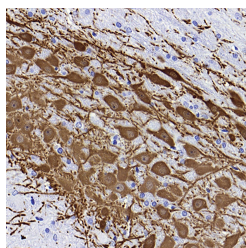
<b>Catalog No.</b>	E-AB-70206	<b>Reactivity</b>	M,R
<b>Storage</b>	Store at -20°C. Avoid freeze / thaw cycles.	<b>Host</b>	Mouse
<b>Applications</b>	IHC,IF	<b>Isotype</b>	IgG

**Note:** Centrifuge before opening to ensure complete recovery of vial contents.

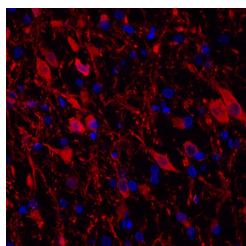
### Images



Immunohistochemistry analysis of paraffin-embedded mouse striatum using TH Monoclonal Antibody at dilution of 1:1000.



Immunohistochemistry analysis of paraffin-embedded rat substantia nigra using TH Monoclonal Antibody at dilution of 1:1000.



Immunofluorescence analysis of paraffin-embedded rat brain using TH Monoclonal Antibody at dilution of 1:400.

### Immunogen Information

<b>Immunogen</b>	Recombinant protein corresponding to Mouse Tyrosine Hydroxylase
<b>Swissprot</b>	P24529,P04177
<b>Synonyms</b>	Dystonia 14,DYT14,DYT5b,EC 1.14.16.2,Tyrosine 3-monooxygenase,Tyrosine hydroxylase

### Product Information

<b>Buffer</b>	PBS with 0.02% sodium azide, 1% protective protein and 50% glycerol, pH7.4
<b>Purify</b>	Affinity purification
<b>Clone No.</b>	5B7D10
<b>Dilution</b>	IHC 1:500-1:2000, IF 1:300-1:800

### Background

TH(Tyrosine 3-monooxygenase) converts L-tyrosine to L-3,4-dihydroxyphenylalanine (L-DOPA),the essential and rate-limiting step to formation of dopamine and other catecholamines. TH plays an important role in the physiology of adrenergic neurons and can be used as a marker for dopaminergic and noradrenergic neurons.

#### For Research Use Only

Thank you for your recent purchase.  
 If you would like to learn more about antibodies,please visit [www.elabscience.com](http://www.elabscience.com).

**Focus on your research**  
**Service for life science**

Applications:WB-Western Blot IHC-Immunohistochemistry IF-Immunofluorescence IP-Immunoprecipitation FC-Flow cytometry ChIP-Chromatin Immunoprecipitation Reactivity: H-Human R-Rat M-Mouse Mk-Monkey Dg-Dog Ch-Chicken Hm-Hamster Rb-Rabbit Sh-Sheep Pg-Pig Z-Zebrafish X-Xenopus C-Cow.