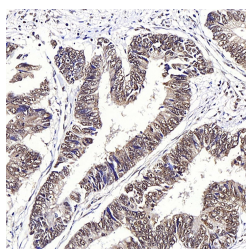


## JMJD6 Polyclonal Antibody

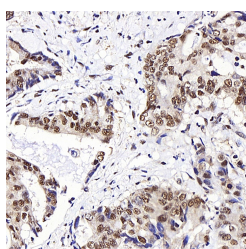
|                     |   |                   |        |
|---------------------|---|-------------------|--------|
| <b>Catalog No.</b>  | E-AB-70209                                  | <b>Reactivity</b> | H,M,R  |
| <b>Storage</b>      | Store at -20°C. Avoid freeze / thaw cycles. | <b>Host</b>       | Rabbit |
| <b>Applications</b> | IHC   | <b>Isotype</b>    | IgG    |

**Note:** Centrifuge before opening to ensure complete recovery of vial contents.

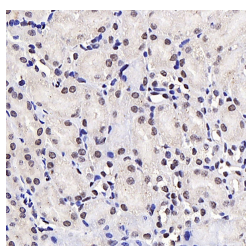
### Images



Immunohistochemistry analysis of paraffin-embedded human colon cancer using JMJD6 Polyclonal Antibody at dilution of 1:1000.



Immunohistochemistry analysis of paraffin-embedded human stomach cancer using JMJD6 Polyclonal Antibody at dilution of 1:1000.



Immunohistochemistry analysis of paraffin-embedded mouse kidney using JMJD6 Polyclonal Antibody at dilution of 1:1000.

### Immunogen Information

|                  |  |
|------------------|--|
| <b>Immunogen</b> | KLH conjugated Synthetic peptide corresponding to Mouse JMJD6          |
| <b>Swissprot</b> | Q6NYC1,Q9ERI5,Q6AYK2   |
| <b>Synonyms</b>  | JMJD6, PSR, PTDSR, PTDSR1, arginine demethylase and lysine hydroxylase |

### Product Information

|                 |  |
|-----------------|--|
| <b>Buffer</b>   | PBS with 0.02% sodium azide, 1% protective protein and 50% glycerol, pH7.4 |
| <b>Purify</b>   | Affinity purification  |
| <b>Dilution</b> | IHC 1:500-1:2000   |

### Background

This gene encodes a nuclear protein with a JmjC domain. JmjC domain-containing proteins are predicted to function as protein hydroxylases or histone demethylases. This protein was first identified as a putative phosphatidylserine receptor involved in phagocytosis of apoptotic cells; however, subsequent studies have indicated that it does not directly function in the clearance of apoptotic cells, and questioned whether it is a true phosphatidylserine receptor. Multiple transcript variants encoding different isoforms have been found for this gene.

#### For Research Use Only

Thank you for your recent purchase.  
 If you would like to learn more about antibodies, please visit [www.elabscience.com](http://www.elabscience.com).

**Focus on your research  
 Service for life science**

Applications:WB-Western Blot IHC-Immunohistochemistry IF-Immunofluorescence IP-Immunoprecipitation FC-Flow cytometry ChIP-Chromatin Immunoprecipitation Reactivity: H-Human R-Rat M-Mouse Mk-Monkey Dg-Dog Ch-Chicken Hm-Hamster Rb-Rabbit Sh-Sheep Pg-Pig Z-Zebrafish X-Xenopus C-Cow.