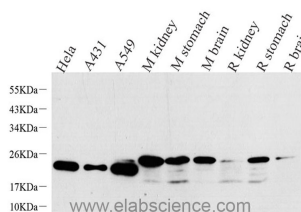


NTS Polyclonal Antibody

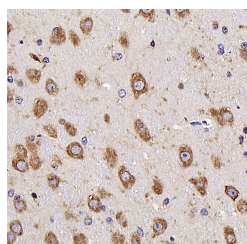
| | | | |
|---------------------|---|-------------------|--------|
| Catalog No. | E-AB-70214 | Reactivity | H,M,R |
| Storage | Store at -20°C. Avoid freeze / thaw cycles. | Host | Rabbit |
| Applications | WB,IHC | Isotype | IgG |

Note: Centrifuge before opening to ensure complete recovery of vial contents.

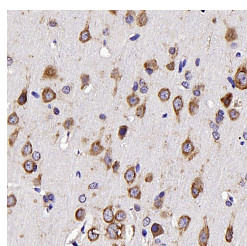
Images



Western Blot analysis of various samples using NTS Polyclonal Antibody at dilution of 1:1000.



Immunohistochemistry analysis of paraffin-embedded mouse brain using NTS Polyclonal Antibody at dilution of 1:300.



Immunohistochemistry analysis of paraffin-embedded rat brain using NTS Polyclonal Antibody at dilution of 1:300.

Immunogen Information

| | |
|------------------|---|
| Immunogen | KLH conjugated Synthetic peptide corresponding to Mouse Neurotensin |
| Swissprot | P30990,Q9D3P9 |
| Synonyms | Pro-Neurotensin/Neuromedin, Neurotensin/Neuromedin N, NT, Nts |

Product Information

| | |
|----------------------|--|
| Calculated MW | 20kDa |
| Observed MW | 20kDa |
| Buffer | PBS with 0.02% sodium azide, 1% protective protein and 50% glycerol, pH7.4 |
| Purify | Affinity purification |
| Dilution | WB 1:500-1:2000, IHC 1:300-1:800 |

Background

This gene encodes a common precursor for two peptides, neuromedin N and neurotensin. Neurotensin is a secreted tridecapeptide, which is widely distributed throughout the central nervous system, and may function as a neurotransmitter or a neuromodulator. It may be involved in dopamine-associated pathophysiological events, in the maintenance of gut structure and function, and in the regulation of fat metabolism. Tissue-specific processing may lead to the formation in some tissues of larger forms of neuromedin N and neurotensin. The large forms may represent more stable peptides that are also biologically active.

For Research Use Only

Thank you for your recent purchase.
 If you would like to learn more about antibodies, please visit www.elabscience.com.

**Focus on your research
 Service for life science**

Applications: WB-Western Blot IHC-Immunohistochemistry IF-Immunofluorescence IP-Immunoprecipitation FC-Flow cytometry ChIP-Chromatin Immunoprecipitation Reactivity: H-Human R-Rat M-Mouse Mk-Monkey Dg-Dog Ch-Chicken Hm-Hamster Rb-Rabbit Sh-Sheep Pg-Pig Z-Zebrafish X-Xenopus C-Cow.