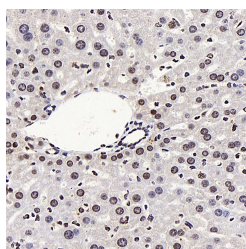


LXR alpha Polyclonal Antibody

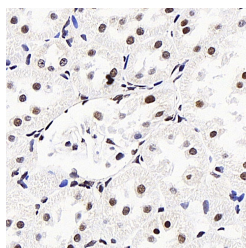
Catalog No.	E-AB-70218	Reactivity	M,R
Storage	Store at -20°C. Avoid freeze / thaw cycles.	Host	Rabbit
Applications	IHC	Isotype	IgG

Note: Centrifuge before opening to ensure complete recovery of vial contents.

Images



Immunohistochemistry analysis of paraffin-embedded mouse liver using LXR alpha Polyclonal Antibody at dilution of 1:400.



Immunohistochemistry analysis of paraffin-embedded rat kidney using LXR alpha Polyclonal Antibody at dilution of 1:400.

Immunogen Information

Immunogen	KLH conjugated Synthetic peptide corresponding to Mouse LXR α
Swissprot	Q9Z0Y9,Q62685
Synonyms	NR1H3, LXR-a, LXRA, RLD-1, Liver X receptor alpha, nuclear receptor subfamily 1 group H member 3

Product Information

Buffer	PBS with 0.02% sodium azide, 1% protective protein and 50% glycerol, pH7.4
Purify	Affinity purification
Dilution	IHC 1:400-1:1500

Background

NR1H3, also known as LXRA, is a liver X receptor, which forms a subfamily of the nuclear receptor superfamily and are key regulators of macrophage function, controlling transcriptional programs involved in lipid homeostasis and inflammation. It's also a ligand-activated LXR and forms heterodimers with retinoid X receptor, then participates in regulating expression of target genes containing LXR response elements.

For Research Use Only

Thank you for your recent purchase.
 If you would like to learn more about antibodies, please visit www.elabscience.com.

**Focus on your research
 Service for life science**

Applications: WB-Western Blot IHC-Immunohistochemistry IF-Immunofluorescence IP-Immunoprecipitation FC-Flow cytometry ChIP-Chromatin Immunoprecipitation Reactivity: H-Human R-Rat M-Mouse Mk-Monkey Dg-Dog Ch-Chicken Hm-Hamster Rb-Rabbit Sh-Sheep Pg-Pig Z-Zebrafish X-Xenopus C-Cow.