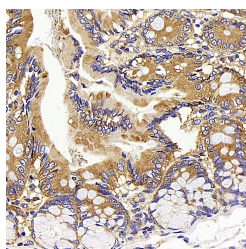


CD13 Polyclonal Antibody

Catalog No.	E-AB-70224	Reactivity	R
Storage	Store at -20°C. Avoid freeze / thaw cycles.	Host	Rabbit
Applications	IHC	Isotype	IgG

Note: Centrifuge before opening to ensure complete recovery of vial contents.

Images



Immunohistochemistry analysis of paraffin-embedded rat colon using CD13 Polyclonal Antibody at dilution of 1:400.

Immunogen Information

Immunogen	Recombinant protein corresponding to Mouse CD13
Swissprot	P97449,P15684
Synonyms	ANPEP, APN, CD13, GP150, LAP1, P150, PEPN, alanyl aminopeptidase

Product Information

Buffer	PBS with 0.02% sodium azide, 1% protective protein and 50% glycerol, pH7.4
Purify	Affinity purification
Dilution	IHC 1:500-1:2000

Background

CD13/aminopeptidase N is a 150 kDa cell surface glycoprotein, which was originally used as a marker for subpopulations of hematopoietic cells. CD13 is widely distributed in a variety of mammalian cells, such as monocyte/macrophages, fibroblasts, neutrophils, endothelial cells, and epithelial cells. CD13 is also a pan-myeloid marker, present on mature granulocytes and monocytes.

For Research Use Only

Thank you for your recent purchase.
 If you would like to learn more about antibodies, please visit www.elabscience.com.

**Focus on your research
 Service for life science**

Applications: WB-Western Blot IHC-Immunohistochemistry IF-Immunofluorescence IP-Immunoprecipitation FC-Flow cytometry ChIP-Chromatin Immunoprecipitation Reactivity: H-Human R-Rat M-Mouse Mk-Monkey Dg-Dog Ch-Chicken Hm-Hamster Rb-Rabbit Sh-Sheep Pg-Pig Z-Zebrafish X-Xenopus C-Cow.