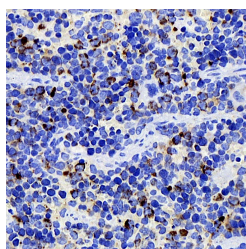


CD284 Monoclonal Antibody

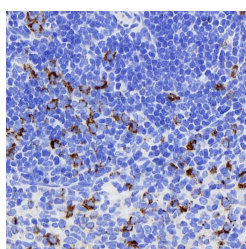
Catalog No.	E-AB-70229	Reactivity	M,R
Storage	Store at -20°C. Avoid freeze / thaw cycles.	Host	Mouse
Applications	IHC	Isotype	IgG

Note: Centrifuge before opening to ensure complete recovery of vial contents.

Images



Immunohistochemistry analysis of paraffin-embedded mouse spleen using CD284 Monoclonal Antibody at dilution of 1:400.



Immunohistochemistry analysis of paraffin-embedded rat spleen using CD284 Monoclonal Antibody at dilution of 1:400.

Immunogen Information

Immunogen	Recombinant protein corresponding to Mouse TLR4
Swissprot	Q9QUK6,Q9QX05
Synonyms	ARMD10,CD284,CD284 antigen,Homolog of Drosophila toll,hToll,TLR 4

Product Information

Buffer	PBS with 0.02% sodium azide, 1% protective protein and 50% glycerol, pH7.4
Purify	Affinity purification
Clone No.	2E12C8
Dilution	IHC 1:200-1:800

Background

TLR4,also named as CD284,belongs to the Toll-like receptor family. TLR4 cooperates with LY96 and CD14 to mediates the innate immune response to bacterial lipopolysaccharide (LPS). TLR4 acts via MYD88,TIRAP and TRAF6,leading to NF-kappa-B activation,cytokine secretion and the inflammatory response. Three alternatively spliced transcript variants that encode different protein isoforms have been described.

For Research Use Only

Thank you for your recent purchase.
 If you would like to learn more about antibodies,please visit www.elabscience.com.

**Focus on your research
 Service for life science**

Applications:WB-Western Blot IHC-Immunohistochemistry IF-Immunofluorescence IP-Immunoprecipitation FC-Flow cytometry ChIP-Chromatin Immunoprecipitation Reactivity: H-Human R-Rat M-Mouse Mk-Monkey Dg-Dog Ch-Chicken Hm-Hamster Rb-Rabbit Sh-Sheep Pg-Pig Z-Zebrafish X-Xenopus C-Cow.