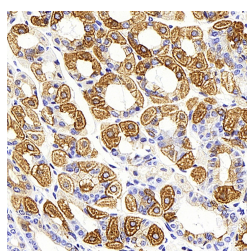


CK-19 Monoclonal Antibody

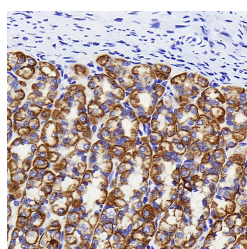
Catalog No.	E-AB-70231	Reactivity	M,R
Storage	Store at -20°C. Avoid freeze / thaw cycles.	Host	Mouse
Applications	IHC	Isotype	IgG

Note: Centrifuge before opening to ensure complete recovery of vial contents.

Images



Immunohistochemistry analysis of paraffin-embedded mouse stomach using CK-19 Monoclonal Antibody at dilution of 1:1000.



Immunohistochemistry analysis of paraffin-embedded rat stomach using CK-19 Monoclonal Antibody at dilution of 1:1000.

Immunogen Information

Immunogen	KLH conjugated Synthetic peptide corresponding to Mouse Cytokeratin 19
Swissprot	P19001,Q63279
Synonyms	40 kDa keratin intermediate filament,K1CS,Keratin 19,Keratin type I 40 Kd

Product Information

Buffer	PBS with 0.02% sodium azide, 1% protective protein and 50% glycerol, pH7.4
Purify	Affinity purification
Clone No.	6D6G12
Dilution	IHC 1:500-1:2000

Background

The keratins are intermediate filament proteins responsible for the structural integrity of epithelial cells. KRT19,one of type I keratins,is specifically expressed in the periderm,the transiently superficial layer that envelopes the developing epidermis. Due to its high sensitivity,KRT19 is the most used marker for detection of tumor cells disseminated in lymph nodes,peripheral blood,and bone marrow of breast cancer patients. This antibody,generated against full length KRT19 protein,also recognizes KRT17,another type I keratin homologous to KRT19. KRT17 is used as a marker for trauma.

For Research Use Only

Thank you for your recent purchase.
 If you would like to learn more about antibodies,please visit www.elabscience.com.

**Focus on your research
 Service for life science**

Applications:WB-Western Blot IHC-Immunohistochemistry IF-Immunofluorescence IP-Immunoprecipitation FC-Flow cytometry ChIP-Chromatin Immunoprecipitation Reactivity: H-Human R-Rat M-Mouse Mk-Monkey Dg-Dog Ch-Chicken Hm-Hamster Rb-Rabbit Sh-Sheep Pg-Pig Z-Zebrafish X-Xenopus C-Cow.