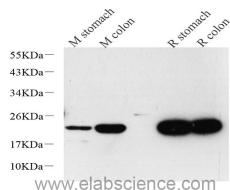


## TAGLN Polyclonal Antibody

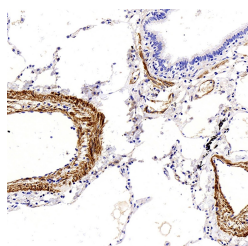
<b>Catalog No.</b>	E-AB-70234	<b>Reactivity</b>	H,M,R
<b>Storage</b>	Store at -20°C. Avoid freeze / thaw cycles.	<b>Host</b>	Rabbit
<b>Applications</b>	WB,IHC	<b>Isotype</b>	IgG

**Note:** Centrifuge before opening to ensure complete recovery of vial contents.

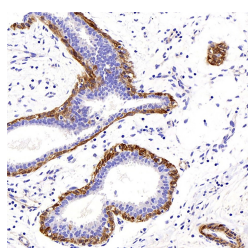
### Images



Western Blot analysis of various samples using TAGLN Polyclonal Antibody at dilution of 1:600.



Immunohistochemistry analysis of paraffin-embedded human lung cancer using TAGLN Polyclonal Antibody at dilution of 1:400.



Immunohistochemistry analysis of paraffin-embedded human breast cancer using TAGLN Polyclonal Antibody at dilution of 1:400.

### Immunogen Information

<b>Immunogen</b>	KLH conjugated Synthetic peptide corresponding to Mouse SM22 $\alpha$
<b>Swissprot</b>	Q01995,P37804,P31232
<b>Synonyms</b>	TAGLN, SM22, SMCC, TAGLN1, WS3-10, transgelin, SM22-alpha

### Product Information

<b>Calculated MW</b>	22kDa
<b>Observed MW</b>	22kDa
<b>Buffer</b>	PBS with 0.02% sodium azide, 1% protective protein and 50% glycerol, pH7.4
<b>Purify</b>	Affinity purification
<b>Dilution</b>	WB 1:500-1:2000, IHC 1:300-1:800

### Background

The transgelin family is a group of proteins that belong to 22kd actin-related corpnin superfamily. Of all three isoforms,transgelin 1 is the best characterized. Transgelin 1,also known as SM22alpha,is a specific marker for differentiated smooth muscle cells. Transgelin 2,also known as SM22 beta,is expressed by both smooth muscle and non-smooth muscle cells in a temporally and spatially regulated pattern. Trangenlin 3,also known as NP25,is only found in highly differentiated neuronal cells.

#### For Research Use Only

Thank you for your recent purchase.  
 If you would like to learn more about antibodies,please visit [www.elabscience.com](http://www.elabscience.com).

**Focus on your research  
 Service for life science**

Applications:WB-Western Blot IHC-Immunohistochemistry IF-Immunofluorescence IP-Immunoprecipitation FC-Flow cytometry ChIP-Chromatin Immunoprecipitation Reactivity: H-Human R-Rat M-Mouse Mk-Monkey Dg-Dog Ch-Chicken Hm-Hamster Rb-Rabbit Sh-Sheep Pg-Pig Z-Zebrafish X-Xenopus C-Cow.