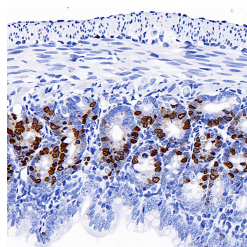


BrdU Monoclonal Antibody

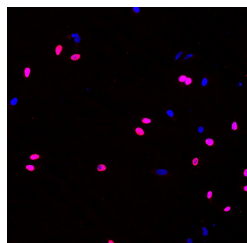
Catalog No.	E-AB-70248	Reactivity	H,M,R
Storage	Store at -20°C. Avoid freeze / thaw cycles.	Host	Mouse
Applications	IHC,IF	Isotype	IgG

Note: Centrifuge before opening to ensure complete recovery of vial contents.

Images



Immunohistochemistry analysis of paraffin-embedded mouse jejunum (intraperitoneal injection BrdU every 2 hours for 4 times) using BrdU Monoclonal Antibody at dilution of 1:300.



Immunofluorescence analysis of HeLa cells (treated with 0.03mg/ml BrdU for 40 min) using BrdU Monoclonal Antibody at dilution of 1:100.

Immunogen Information

Immunogen	KLH conjugated BrdU
Synonyms	Bromodeoxyuridine; Bromodeoxyuridine; 5-Bromo-2'-deoxyuridine; 5-BrdU; Proliferation Marker; 5-Bromo-2-deoxyUridine.

Product Information

Buffer	PBS with 0.02% sodium azide, 1% protective protein and 50% glycerol, pH7.4
Purify	Affinity purification
Clone No.	4B6C12
Dilution	IHC 1:100-1:500, IF 1:100-1:500

Background

Bromodeoxyuridine (5-bromo-2'-deoxyuridine, BrdU, BUdR, BrdUrd) is a synthetic nucleoside that is an analog of thymidine. It can be incorporated into the newly synthesized DNA of replicating cells (during the S phase of the cell cycle), substituting for thymidine during DNA replication. As such, BrdU is used for birth dating and monitoring cell proliferation. BrdU is a toxic and mutagenic substance. It triggers cell death, the formation of teratomas, alters DNA stability, lengthens the cell cycle, and has mitogenic, transcriptional and translational effects on cells that incorporate it.

For Research Use Only

Thank you for your recent purchase.
 If you would like to learn more about antibodies, please visit www.elabscience.com.

**Focus on your research
 Service for life science**

Applications: WB-Western Blot IHC-Immunohistochemistry IF-Immunofluorescence IP-Immunoprecipitation FC-Flow cytometry ChIP-Chromatin Immunoprecipitation Reactivity: H-Human R-Rat M-Mouse Mk-Monkey Dg-Dog Ch-Chicken Hm-Hamster Rb-Rabbit Sh-Sheep Pg-Pig Z-Zebrafish X-Xenopus C-Cow.