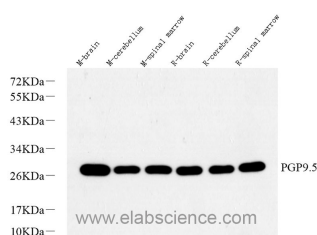


PGP 9.5 Polyclonal Antibody

Catalog No.	E-AB-70251	Reactivity	M,R
Storage	Store at -20°C. Avoid freeze / thaw cycles.	Host	Rabbit
Applications	WB	Isotype	IgG

Note: Centrifuge before opening to ensure complete recovery of vial contents.

Images



Western Blot analysis of various samples using PGP 9.5 Polyclonal Antibody at dilution of 1:1000.

Immunogen Information

Immunogen	Recombinant protein corresponding to Mouse PGP9.5
Swissprot	Q9R0P9,Q00981
Synonyms	UCHL1, HEL-117, NDGOA, PARK5, PGP 9.5, PGP9.5, PGP95, Uch-L1, HEL-S-53, SPG79

Product Information

Calculated MW	27kDa
Observed MW	27kDa
Buffer	PBS with 0.02% sodium azide, 1% protective protein and 50% glycerol, pH7.4
Purify	Affinity purification
Dilution	WB 1:500-1:2000

Background

UCHL1(Ubiquitin carboxyl-terminal hydrolase isozyme L1) is a member of a gene family whose products hydrolyze small C-terminal adducts of ubiquitin to generate the ubiquitin monomer. Expression of UCHL1 is highly specific to neurons and to cells of the diffuse neuroendocrine system and their tumors. It is present in all neurons. This protein is present in brain at concentrations at least 50 times greater than in other organs and is a major protein component of neuronal cytoplasm . And UCHL1 is a Parkinson's disease susceptibility gene .

For Research Use Only

Thank you for your recent purchase.
 If you would like to learn more about antibodies, please visit www.elabscience.com.

**Focus on your research
 Service for life science**

Applications:WB-Western Blot IHC-Immunohistochemistry IF-Immunofluorescence IP-Immunoprecipitation FC-Flow cytometry ChIP-Chromatin Immunoprecipitation Reactivity: H-Human R-Rat M-Mouse Mk-Monkey Dg-Dog Ch-Chicken Hm-Hamster Rb-Rabbit Sh-Sheep Pg-Pig Z-Zebrafish X-Xenopus C-Cow.