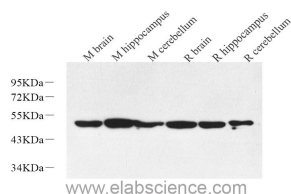


## RBFOX3 Polyclonal Antibody

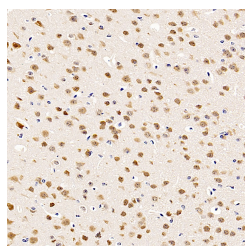
<b>Catalog No.</b>	E-AB-70267	<b>Reactivity</b>	M,R
<b>Storage</b>	Store at -20°C. Avoid freeze / thaw cycles.	<b>Host</b>	Rabbit
<b>Applications</b>	WB,IHC	<b>Isotype</b>	IgG

**Note:** Centrifuge before opening to ensure complete recovery of vial contents.

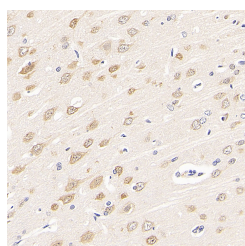
### Images



Western Blot analysis of various samples using RBFOX3 Polyclonal Antibody at dilution of 1:1000.



Immunohistochemistry analysis of paraffin-embedded mouse brain using RBFOX3 Polyclonal Antibody at dilution of 1:500.



Immunohistochemistry analysis of paraffin-embedded rat brain using RBFOX3 Polyclonal Antibody at dilution of 1:300.

### Immunogen Information

<b>Immunogen</b>	KLH conjugated Synthetic peptide corresponding to NeuN
<b>Swissprot</b>	Q8BIF2
<b>Synonyms</b>	FOX3, HRNBP3, NeuN, RBFOX3

### Product Information

<b>Calculated MW</b>	46-48kDa
<b>Observed MW</b>	46-48kDa
<b>Buffer</b>	PBS with 0.02% sodium azide, 1% protective protein and 50% glycerol, pH7.4
<b>Purify</b>	Affinity purification
<b>Dilution</b>	WB 1:500-1:2000, IHC 1:300-1:800

### Background

Immunoprecipitation and mass spectrometry of the two major NeuN species at 45–50 kDa identified both as the RNA binding protein Rbfox3 (a member of the Fox family of alternative splicing factors), confirming and extending the identification of the 45 kDa band as Rbfox3. Mapping of the anti-NeuN reactive epitopes in both R3hdm2 and Rbfox3 reveals a common proline- and glutamine-rich domain that lies at the N-terminus of the Rbfox3 protein. Nuclear Rbfox3 isoforms can also enhance the inclusion of cryptic exons in the Rbfox2 mRNA, resulting in nonsense-mediated decay of the message, thereby contributing to the negative regulation of Rbfox2 by Rbfox3 through a novel mechanism.

#### For Research Use Only

Thank you for your recent purchase.  
 If you would like to learn more about antibodies, please visit [www.elabscience.com](http://www.elabscience.com).

**Focus on your research**  
**Service for life science**

Applications: WB-Western Blot IHC-Immunohistochemistry IF-Immunofluorescence IP-Immunoprecipitation FC-Flow cytometry ChIP-Chromatin Immunoprecipitation Reactivity: H-Human R-Rat M-Mouse Mk-Monkey Dg-Dog Ch-Chicken Hm-Hamster Rb-Rabbit Sh-Sheep Pg-Pig Z-Zebrafish X-Xenopus C-Cow.