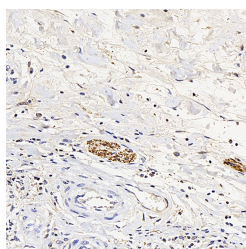


ENO2 Polyclonal Antibody

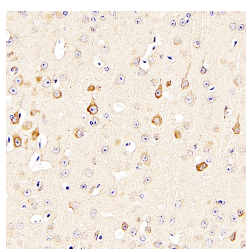
Catalog No.	E-AB-70269	Reactivity	H,M,R
Storage	Store at -20°C. Avoid freeze / thaw cycles.	Host	Rabbit
Applications	IHC	Isotype	IgG

Note: Centrifuge before opening to ensure complete recovery of vial contents.

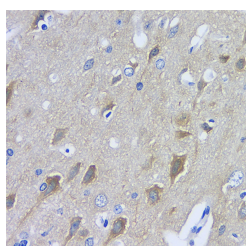
Images



Immunohistochemistry analysis of paraffin-embedded human stomach cancer using ENO2 Polyclonal Antibody at dilution of 1:300.



Immunohistochemistry analysis of paraffin-embedded mouse brain using ENO2 Polyclonal Antibody at dilution of 1:400.



Immunohistochemistry analysis of paraffin-embedded rat brain using ENO2 Polyclonal Antibody at dilution of 1:400.

Immunogen Information

Immunogen	KLH conjugated Synthetic peptide corresponding to Mouse NSE
Swissprot	P09104,P17183,P07323
Synonyms	ENO2, HEL-S-279, NSE, Enolase 2

Product Information

Buffer	PBS with 0.02% sodium azide, 1% protective protein and 50% glycerol, pH7.4
Purify	Affinity purification
Dilution	IHC 1:300-1:1000

Background

Enolases are cytoplasmic glycolytic enzymes that may be involved in differentiation. Three enolase isoenzymes, alpha, beta and gamma, are present in mammalian cells. The alpha form is expressed in most tissues, whereas the beta form is expressed in muscle tissue. The gamma enolase (ENO2), a homodimer, is found in mature neurons and cells of neuronal origin. A switch from alpha enolase to gamma enolase occurs in neural tissue during development.

For Research Use Only

Thank you for your recent purchase.
 If you would like to learn more about antibodies, please visit www.elabscience.com.

**Focus on your research
 Service for life science**

Applications: WB-Western Blot IHC-Immunohistochemistry IF-Immunofluorescence IP-Immunoprecipitation FC-Flow cytometry ChIP-Chromatin Immunoprecipitation Reactivity: H-Human R-Rat M-Mouse Mk-Monkey Dg-Dog Ch-Chicken Hm-Hamster Rb-Rabbit Sh-Sheep Pg-Pig Z-Zebrafish X-Xenopus C-Cow.