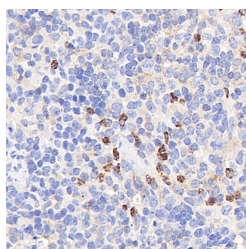


## CYBB Polyclonal Antibody

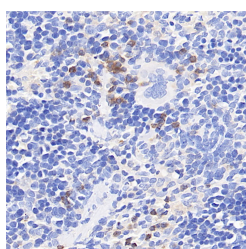
<b>Catalog No.</b>	E-AB-70273	<b>Reactivity</b>	M,R
<b>Storage</b>	Store at -20°C. Avoid freeze / thaw cycles.	<b>Host</b>	Rabbit
<b>Applications</b>	IHC	<b>Isotype</b>	IgG

**Note:** Centrifuge before opening to ensure complete recovery of vial contents.

### Images



Immunohistochemistry analysis of paraffin-embedded mouse spleen using CYBB Polyclonal Antibody at dilution of 1:400.



Immunohistochemistry analysis of paraffin-embedded rat spleen using CYBB Polyclonal Antibody at dilution of 1:400.

### Immunogen Information

<b>Immunogen</b>	Recombinant protein corresponding to Mouse NOX2
<b>Swissprot</b>	Q61093
<b>Synonyms</b>	CYBB, AMCBX2, CGD, GP91-1, GP91-PHOX, GP91PHOX, IMD34, NOX2, p91-PHOX

### Product Information

<b>Buffer</b>	PBS with 0.02% sodium azide, 1% protective protein and 50% glycerol, pH7.4
<b>Purify</b>	Affinity purification
<b>Dilution</b>	IHC 1:200-1:1000

### Background

Cytochrome b (-245) is composed of cytochrome b alpha (CYBA) and beta (CYBB) chain. It has been proposed as a primary component of the microbicidal oxidase system of phagocytes. CYBB deficiency is one of five described biochemical defects associated with chronic granulomatous disease (CGD). In this disorder, there is decreased activity of phagocyte NADPH oxidase; neutrophils are able to phagocytize bacteria but cannot kill them in the phagocytic vacuoles.

#### For Research Use Only

Thank you for your recent purchase.  
 If you would like to learn more about antibodies, please visit [www.elabscience.com](http://www.elabscience.com).

**Focus on your research  
 Service for life science**

Applications:WB-Western Blot IHC-Immunohistochemistry IF-Immunofluorescence IP-Immunoprecipitation FC-Flow cytometry ChIP-Chromatin Immunoprecipitation Reactivity: H-Human R-Rat M-Mouse Mk-Monkey Dg-Dog Ch-Chicken Hm-Hamster Rb-Rabbit Sh-Sheep Pg-Pig Z-Zebrafish X-Xenopus C-Cow.