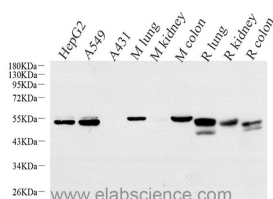


CK-7 Monoclonal Antibody

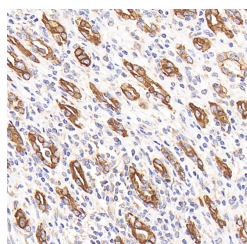
Catalog No.	E-AB-70293	Reactivity	H,M,R
Storage	Store at -20°C. Avoid freeze / thaw cycles.	Host	Mouse
Applications	WB,IHC	Isotype	IgG

Note: Centrifuge before opening to ensure complete recovery of vial contents.

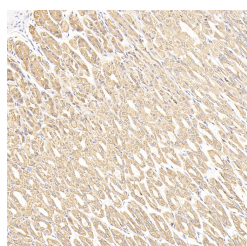
Images



Western Blot analysis of various samples using CK-7 Monoclonal Antibody at dilution of 1:1000.



Immunohistochemistry analysis of paraffin-embedded human stomach cancer using CK-7 Monoclonal Antibody at dilution of 1:300.



Immunohistochemistry analysis of paraffin-embedded mouse stomach cancer using CK-7 Monoclonal Antibody at dilution of 1:300.

Immunogen Information

Immunogen	Recombinant protein corresponding to Mouse Cytokeratin 7
Swissprot	P08729,Q9DCV7,Q6IG12
Synonyms	CK 7,Keratin,Krt2-7,KRT7,MGC11625,MGC129731,MGC3625,Sarcolectin,SCL

Product Information

Calculated MW	51kDa
Observed MW	51kDa
Buffer	PBS with 0.02% sodium azide, 1% protective protein and 50% glycerol, pH7.4
Purify	Affinity purification
Clone No.	7D8G8
Dilution	WB 1:500-1:2000, IHC 1:100-1:500

Background

Keratins are a large family of proteins that form the intermediate filament cytoskeleton of epithelial cells, which are classified into two major sequence types. Type I keratins are a group of acidic intermediate filament proteins, including K9-K23, and the hair keratins Ha1-Ha8. Type II keratins are the basic or neutral counterparts to the acidic type I keratins, including K1-K8, and the hair keratins, Hb1-Hb6. KRT7, also named as cytokeratin 7, is one member of type II basic cytokeratin. It is specifically expressed in the simple epithelia lining the cavities of the internal organs and in the gland ducts and blood vessels, and their neoplasms. KRT7 is marker of epithelial tissues, but not present in carcinomas of stratified squamous cell origin. This antibody is specifically against KRT7.

For Research Use Only

Thank you for your recent purchase.
 If you would like to learn more about antibodies, please visit www.elabscience.com.

Focus on your research
Service for life science

Applications: WB-Western Blot IHC-Immunohistochemistry IF-Immunofluorescence IP-Immunoprecipitation FC-Flow cytometry ChIP-Chromatin Immunoprecipitation Reactivity: H-Human R-Rat M-Mouse Mk-Monkey Dg-Dog Ch-Chicken Hm-Hamster Rb-Rabbit Sh-Sheep Pg-Pig Z-Zebrafish X-Xenopus C-Cow.