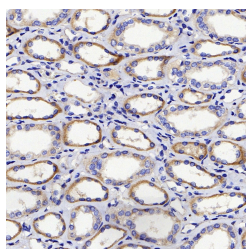


DICER1 Polyclonal Antibody

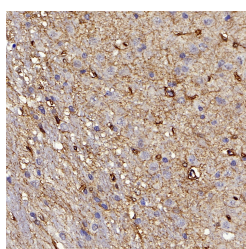
Catalog No.	E-AB-70297	Reactivity	H,R
Storage	Store at -20°C. Avoid freeze / thaw cycles.	Host	Rabbit
Applications	IHC	Isotype	IgG

Note: Centrifuge before opening to ensure complete recovery of vial contents.

Images



Immunohistochemistry analysis of paraffin-embedded human kidney using DICER1 Polyclonal Antibody at dilution of 1:400.



Immunohistochemistry analysis of paraffin-embedded rat brain using DICER1 Polyclonal Antibody at dilution of 1:400.

Immunogen Information

Immunogen	KLH conjugated Synthetic peptide corresponding to Mouse Dicer
Swissprot	Q9UPY3,Q8R418
Synonyms	DICER1, DCR1, Dicer, Dicer1e, HERNA, MNG1, RMSE2, K12H4.8-LIKE, dicer 1, ribonuclease III

Product Information

Buffer	PBS with 0.02% sodium azide, 1% protective protein and 50% glycerol, pH7.4
Purify	Affinity purification
Dilution	IHC 1:300-1:1000

Background

This gene encodes a protein possessing an RNA helicase motif containing a DEXH box in its amino terminus and an RNA motif in the carboxy terminus. The encoded protein functions as a ribonuclease and is required by the RNA interference and small temporal RNA (stRNA) pathways to produce the active small RNA component that represses gene expression. Alternative splicing results in multiple transcript variants.

For Research Use Only

Thank you for your recent purchase.
 If you would like to learn more about antibodies, please visit www.elabscience.com.

**Focus on your research
 Service for life science**

Applications: WB-Western Blot IHC-Immunohistochemistry IF-Immunofluorescence IP-Immunoprecipitation FC-Flow cytometry ChIP-Chromatin Immunoprecipitation Reactivity: H-Human R-Rat M-Mouse Mk-Monkey Dg-Dog Ch-Chicken Hm-Hamster Rb-Rabbit Sh-Sheep Pg-Pig Z-Zebrafish X-Xenopus C-Cow.