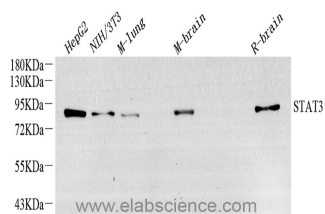


## STAT3 Monoclonal Antibody

<b>Catalog No.</b>	E-AB-70314	<b>Reactivity</b>	H,M,R
<b>Storage</b>	Store at -20°C. Avoid freeze / thaw cycles.	<b>Host</b>	Mouse
<b>Applications</b>	WB	<b>Isotype</b>	IgG

**Note:** Centrifuge before opening to ensure complete recovery of vial contents.

### Images



Western Blot analysis of various samples using STAT3 Monoclonal Antibody at dilution of 1:1500.

### Immunogen Information

<b>Immunogen</b>	Recombinant protein corresponding to Mouse Stat3
<b>Swissprot</b>	P40763,P42227,P52631
<b>Synonyms</b>	1110034C02Rik,Acute Phase Response Factor,Acute-phase response factor,ADMIO

### Product Information

<b>Calculated MW</b>	90kDa
<b>Observed MW</b>	90kDa
<b>Buffer</b>	PBS with 0.02% sodium azide, 1% protective protein and 50% glycerol, pH7.4
<b>Purify</b>	Affinity purification
<b>Clone No.</b>	4B2C9-3
<b>Dilution</b>	WB 1:1000-1:3000

### Background

Transcription factor that binds to the interleukin-6 (IL-6)-responsive elements identified in the promoters of various acute-phase protein genes. Activated by IL31 through IL31RA.

#### For Research Use Only

Thank you for your recent purchase.  
 If you would like to learn more about antibodies, please visit [www.elabscience.com](http://www.elabscience.com).

**Focus on your research  
 Service for life science**

Applications:WB-Western Blot IHC-Immunohistochemistry IF-Immunofluorescence IP-Immunoprecipitation FC-Flow cytometry ChIP-Chromatin Immunoprecipitation Reactivity: H-Human R-Rat M-Mouse Mk-Monkey Dg-Dog Ch-Chicken Hm-Hamster Rb-Rabbit Sh-Sheep Pg-Pig Z-Zebrafish X-Xenopus C-Cow.