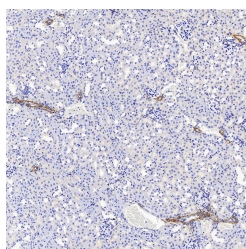


COL1A1 Polyclonal Antibody

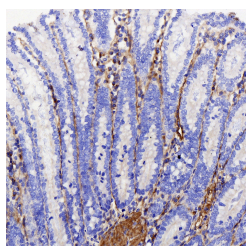
Catalog No.	E-AB-70322	Reactivity	M,R
Storage	Store at -20°C. Avoid freeze / thaw cycles.	Host	Rabbit
Applications	IHC	Isotype	IgG

Note: Centrifuge before opening to ensure complete recovery of vial contents.

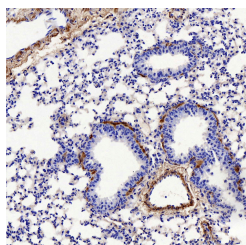
Images



Immunohistochemistry (antigen was repair with 0.4% pepsin for 20 min) analysis of paraffin-embedded Mouse kidney using COL1A1 Polyclonal Antibody at dilution of 1:500.



Immunohistochemistry (antigen was repair with 0.4% pepsin for 20 min) analysis of paraffin-embedded Rat colon using COL1A1 Polyclonal Antibody at dilution of 1:500.



Immunohistochemistry (antigen was repair with 0.4% pepsin for 20 min) analysis of paraffin-embedded mouse lung using COL1A1 Polyclonal Antibody at dilution of 1:500.

Immunogen Information

Immunogen	Recombinant protein corresponding to Mouse COL1A1
Swissprot	P11087,P02452
Synonyms	COL1A1, EDSC, OI1, OI2, OI3, OI4, collagen type I alpha 1, collagen type I alpha 1 chain

Product Information

Buffer	PBS with 0.02% sodium azide, 1% protective protein and 50% glycerol, pH7.4
Purify	Affinity purification
Dilution	IHC 1:300-1:1000

Background

COL1A1 (Collagen Type I Alpha 1 Chain) is a Protein Coding gene. Diseases associated with COL1A1 include Caffey Disease and Osteogenesis Imperfecta, Type I. Among its related pathways are Collagen chain trimerization and Transcription_Role of VDR in regulation of genes involved in osteoporosis. GO annotations related to this gene include identical protein binding and platelet-derived growth factor binding. An important paralog of this gene is COL2A1. This gene encodes the pro-alpha1 chains of type I collagen whose triple helix comprises two alpha1 chains and one alpha2 chain. Type I is a fibril-forming collagen found in most connective tissues and is abundant in bone, cornea, dermis and tendon. Mutations in this gene are associated with osteogenesis imperfecta types I-IV, Ehlers-Danlos syndrome type VIIA, Ehlers-Danlos syndrome Classical type, Caffey Disease and idiopathic osteoporosis. Reciprocal translocations between chromosomes 17 and 22, where this gene and the gene for platelet-derived growth factor beta are located, are associated with a particular type of skin tumor called dermatofibrosarcoma protuberans, resulting from unregulated expression of the growth factor. Two transcripts, resulting from the use of alternate polyadenylation signals, have been identified for this gene.

For Research Use Only

Thank you for your recent purchase.
 If you would like to learn more about antibodies, please visit www.elabscience.com.

**Focus on your research
 Service for life science**

Applications:WB-Western Blot IHC-Immunohistochemistry IF-Immunofluorescence IP-Immunoprecipitation FC-Flow cytometry ChIP-Chromatin Immunoprecipitation Reactivity: H-Human R-Rat M-Mouse Mk-Monkey Dg-Dog Ch-Chicken Hm-Hamster Rb-Rabbit Sh-Sheep Pg-Pig Z-Zebrafish X-Xenopus C-Cow.