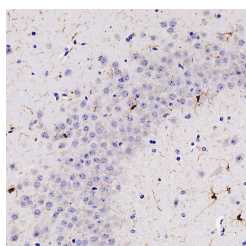


AIF1 Polyclonal Antibody

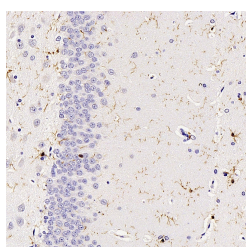
Catalog No.	E-AB-70324	Reactivity	M,R
Storage	Store at -20°C. Avoid freeze / thaw cycles.	Host	Rabbit
Applications	IHC	Isotype	IgG

Note: Centrifuge before opening to ensure complete recovery of vial contents.

Images



Immunohistochemistry analysis of paraffin-embedded mouse brain using AIF1 Polyclonal Antibody at dilution of 1:300.



Immunohistochemistry analysis of paraffin-embedded Rat brain using AIF1 Polyclonal Antibody at dilution of 1:300.

Immunogen Information

Immunogen	KLH conjugated Synthetic peptide corresponding to Human IBA-1
Swissprot	O70200,P55009
Synonyms	AIF1, AIF-1, IBA1, IRT-1, IRT1, allograft inflammatory factor 1

Product Information

Buffer	PBS with 0.02% sodium azide, 1% protective protein and 50% glycerol, pH7.4
Purify	Affinity purification
Dilution	IHC 1:200-1:800

Background

This gene is induced by cytokines and interferon. Its protein product is thought to be involved in negative regulation of growth of vascular smooth muscle cells, which contributes to the anti-inflammatory response to vessel wall trauma. Three transcript variants encoding different isoforms have been found for this gene. Actin-binding protein that enhances membrane ruffling and RAC activation. Enhances the actin-bundling activity of LCPI. Binds calcium. Plays a role in RAC signaling and in phagocytosis. May play a role in macrophage activation and function. Promotes the proliferation of vascular smooth muscle cells and of T-lymphocytes. Enhances lymphocyte migration. Plays a role in vascular inflammation.

For Research Use Only

Thank you for your recent purchase.
 If you would like to learn more about antibodies, please visit www.elabscience.com.

**Focus on your research
 Service for life science**

Applications: WB-Western Blot IHC-Immunohistochemistry IF-Immunofluorescence IP-Immunoprecipitation FC-Flow cytometry ChIP-Chromatin Immunoprecipitation Reactivity: H-Human R-Rat M-Mouse Mk-Monkey Dg-Dog Ch-Chicken Hm-Hamster Rb-Rabbit Sh-Sheep Pg-Pig Z-Zebrafish X-Xenopus C-Cow.