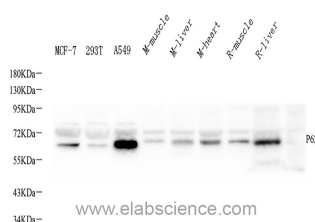


P62/SQSTM1 Polyclonal Antibody

Catalog No.	E-AB-70325	Reactivity	H,M,R
Storage	Store at -20°C. Avoid freeze / thaw cycles.	Host	Rabbit
Applications	WB	Isotype	IgG

Note: Centrifuge before opening to ensure complete recovery of vial contents.

Images



Western Blot analysis of various samples using P62/SQSTM1 Polyclonal Antibody at dilution of 1:1000.

Immunogen Information

Immunogen	Recombinant protein corresponding to Mouse P62
Swissprot	Q13501,O08623,Q64337
Synonyms	SQSTM1,A170,OSIL,PDB3,ZIP3,p60,p62, p62B, FTDALS3,Sequestosome 1,NADGP,DMRV

Product Information

Calculated MW	48kDa
Observed MW	62kDa
Buffer	PBS with 0.02% sodium azide, 1% protective protein and 50% glycerol, pH7.4
Purify	Affinity purification
Dilution	WB 1:500-1:2000

Background

Sequestosome 1 (SQSTM1/p62) is a multifunctional adaptor protein implicated in selective autophagy, cell signaling pathways, and tumorigenesis. p62 has been implicated in shuttling ubiquitinated and sometimes aggregated proteins for autophagic degradation. As an autophagy-specific substrate, p62 is degraded during the autophagic process, which makes intracellular level of p62 a marker for autophagy flux. p62 is at the cross-roads of several signaling pathways including Ras/Raf/MAPK and NFκB and plays an important role in cancer. p62 is a component of inclusion bodies/protein aggregates found in human diseases, including Huntington's disease, Alzheimer's disease, Parkinson's disease in the brain, and nephropathic cystinosis in kidney (22074114,22860231,22714671). The molecular weight of p62 is predicted as 48/38 kDa, while western blot analyses using this antibody demonstrate the major band around 60-62 kDa in various tissues.

For Research Use Only

Thank you for your recent purchase.
 If you would like to learn more about antibodies, please visit www.elabscience.com.

**Focus on your research
 Service for life science**

Applications: WB-Western Blot IHC-Immunohistochemistry IF-Immunofluorescence IP-Immunoprecipitation FC-Flow cytometry ChIP-Chromatin Immunoprecipitation Reactivity: H-Human R-Rat M-Mouse Mk-Monkey Dg-Dog Ch-Chicken Hm-Hamster Rb-Rabbit Sh-Sheep Pg-Pig Z-Zebrafish X-Xenopus C-Cow.