

LMNA Polyclonal Antibody

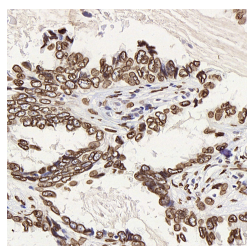
Catalog No.	E-AB-70326	Reactivity	H,M,R
Storage	Store at -20°C. Avoid freeze / thaw cycles.	Host	Rabbit
Applications	WB,IHC	Isotype	IgG

Note: Centrifuge before opening to ensure complete recovery of vial contents.

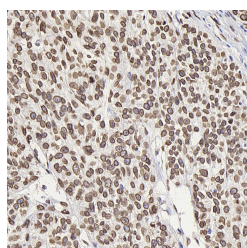
Images



Western Blot analysis of various samples using LMNA Polyclonal Antibody at dilution of 1:1000.



Immunohistochemistry analysis of paraffin-embedded human lung cancer using LMNA Polyclonal Antibody at dilution of 1:300.



Immunohistochemistry analysis of paraffin-embedded human esophageal cancer using LMNA Polyclonal Antibody at dilution of 1:300.

Immunogen Information

Immunogen	KLH conjugated Synthetic peptide corresponding to Mouse Lamin A/C
Swissprot	P02545,P48678,P48679
Synonyms	LMNA, CDCD1, CDDC, CMD1A, CMT2B1EMD2, FPL, FPLD, FPLD2, HGPS, IDC LDP1, LFP, LGMD1B, LMN1, LMNCLMNL1, PRO1, lamin A/C, MADA

Product Information

Calculated MW	65/74kDa
Observed MW	65/74kDa
Buffer	PBS with 0.02% sodium azide, 1% protective protein and 50% glycerol, pH7.4
Purify	Affinity purification
Dilution	WB 1:1000-1:2000, IHC 1:300-1:800

Background

The nuclear lamina consists of a two-dimensional matrix of proteins located next to the inner nuclear membrane. The lamin family of proteins make up the matrix and are highly conserved in evolution. During mitosis, the lamina matrix is reversibly disassembled as the lamin proteins are phosphorylated. Lamin proteins are thought to be involved in nuclear stability, chromatin structure and gene expression. Vertebrate lamins consist of two types, A and B. Alternative splicing results in multiple transcript variants.

For Research Use Only

Thank you for your recent purchase.
 If you would like to learn more about antibodies, please visit www.elabscience.com.

**Focus on your research
 Service for life science**

Applications:WB-Western Blot IHC-Immunohistochemistry IF-Immunofluorescence IP-Immunoprecipitation FC-Flow cytometry ChIP-Chromatin Immunoprecipitation Reactivity: H-Human R-Rat M-Mouse Mk-Monkey Dg-Dog Ch-Chicken Hm-Hamster Rb-Rabbit Sh-Sheep Pg-Pig Z-Zebrafish X-Xenopus C-Cow.