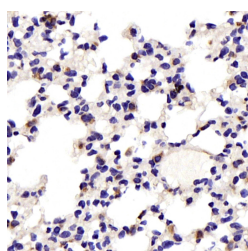


JNK1/2/3 Polyclonal Antibody

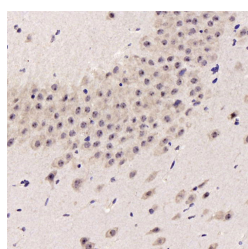
Catalog No.	E-AB-70345	Reactivity	M,R
Storage	Store at -20°C. Avoid freeze / thaw cycles.	Host	Rabbit
Applications	IHC	Isotype	IgG

Note: Centrifuge before opening to ensure complete recovery of vial contents.

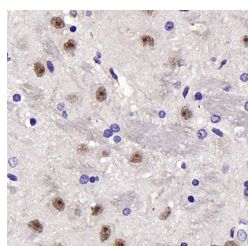
Images



Immunohistochemistry analysis of paraffin-embedded Mouse lung using JNK1/2/3 Polyclonal Antibody at dilution of 1:200.



Immunohistochemistry analysis of paraffin-embedded Mouse brain using JNK1/2/3 Polyclonal Antibody at dilution of 1:200.



Immunohistochemistry analysis of paraffin-embedded Rat brain using JNK1/2/3 Polyclonal Antibody at dilution of 1:200.

Immunogen Information

Immunogen	KLH conjugated Synthetic peptide corresponding to human JNK1
Swissprot	Q91Y86,Q9WTU6,Q61831
Synonyms	JNK1 + JNK2 + JNK3, JNK1/2/3, JNK1+2+3, MAPK8, MAPK9, MAPK10, c Jun N terminal kinase 1, c Jun N terminal kinase 2, c Jun N terminal kinase 3

Product Information

Buffer	PBS with 0.02% sodium azide, 1% protective protein and 50% glycerol, pH7.4
Purify	Affinity purification
Dilution	IHC 1:200-1:500

Background

c-Jun N-terminal kinases (JNKs) phosphorylate and augment transcriptional activity of c-Jun. JNKs originate from three genes that yield ten isoforms through alternative mRNA splicing, including JNK1 α 1, JNK1 β 1, JNK2 α 1, JNK2 β 1 and JNK3 α 1, which represent the p46 isoforms, and JNK1 α 2, JNK1 β 2, JNK2 α 2, JNK2 β 2 and JNK3 β 2, which represent the p54 isoforms. JNKs coordinate cell responses to stress and influence regulation of cell growth and transformation. The human JNK1 (PRKM8, SAPK1, MAPK8) gene maps to chromosome 10q11.22 and shares 83% amino acid identity with JNK2. JNK1 is necessary for normal activation and differentiation of CD4 helper T (TH) cells into TH1 and TH2 effector cells. Capsaicin activates JNK1 and p38 in Ras-transformed human breast epithelial cells. Nitrogen oxides (NOx) upregulate JNK1 in addition to c-Fos, c-Jun and other signaling kinases, including MEKK1 and p38.

For Research Use Only

Thank you for your recent purchase.
 If you would like to learn more about antibodies, please visit www.elabscience.com.

**Focus on your research
 Service for life science**

Applications: WB-Western Blot IHC-Immunohistochemistry IF-Immunofluorescence IP-Immunoprecipitation FC-Flow cytometry ChIP-Chromatin Immunoprecipitation Reactivity: H-Human R-Rat M-Mouse Mk-Monkey Dg-Dog Ch-Chicken Hm-Hamster Rb-Rabbit Sh-Sheep Pg-Pig Z-Zebrafish X-Xenopus C-Cow.