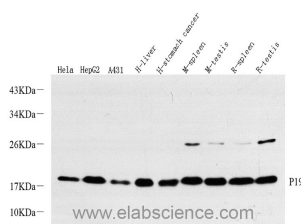


p19 INK4d Polyclonal Antibody

Catalog No.	E-AB-70351	Reactivity	H,M,R
Storage	Store at -20°C. Avoid freeze / thaw cycles.	Host	Rabbit
Applications	WB	Isotype	IgG

Note: Centrifuge before opening to ensure complete recovery of vial contents.

Images



Western Blot analysis of various samples using p19 INK4d Polyclonal Antibody at dilution of 1:500.

Immunogen Information

Immunogen	KLH conjugated Synthetic peptide corresponding to Mouse p19 INK4d
Swissprot	P55273,Q60773
Synonyms	CDKN2D, INK4D, p19, p19-INK4D, cyclin dependent kinase inhibitor 2D

Product Information

Calculated MW	19kDa
Observed MW	19kDa
Buffer	PBS with 0.02% sodium azide, 1% protective protein and 50% glycerol, pH7.4
Purify	Affinity purification
Dilution	WB 1:500-1:2000

Background

The protein encoded by this gene is a member of the INK4 family of cyclin-dependent kinase inhibitors. This protein has been shown to form a stable complex with CDK4 or CDK6, and prevent the activation of the CDK kinases, thus function as a cell growth regulator that controls cell cycle G1 progression. The abundance of the transcript of this gene was found to oscillate in a cell-cycle dependent manner with the lowest expression at mid G1 and a maximal expression during S phase. The negative regulation of the cell cycle involved in this protein was shown to participate in repressing neuronal proliferation, as well as spermatogenesis. Two alternatively spliced variants of this gene, which encode an identical protein, have been reported.

For Research Use Only

Thank you for your recent purchase.
 If you would like to learn more about antibodies, please visit www.elabscience.com.

Focus on your research
Service for life science

Applications:WB-Western Blot IHC-Immunohistochemistry IF-Immunofluorescence IP-Immunoprecipitation FC-Flow cytometry ChIP-Chromatin Immunoprecipitation Reactivity: H-Human R-Rat M-Mouse Mk-Monkey Dg-Dog Ch-Chicken Hm-Hamster Rb-Rabbit Sh-Sheep Pg-Pig Z-Zebrafish X-Xenopus C-Cow.