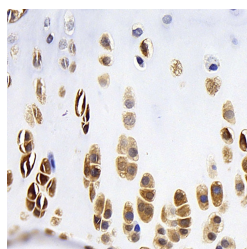


## BMP2 Monoclonal Antibody

<b>Catalog No.</b>	E-AB-70352	<b>Reactivity</b>	R
<b>Storage</b>	Store at -20°C. Avoid freeze / thaw cycles.	<b>Host</b>	Mouse
<b>Applications</b>	IHC	<b>Isotype</b>	IgG

**Note:** Centrifuge before opening to ensure complete recovery of vial contents.

### Images



Immunohistochemistry analysis of paraffin-embedded rat bone using BMP2 Monoclonal Antibody at dilution of 1:400.

### Immunogen Information

<b>Immunogen</b>	Recombinant protein corresponding to Mouse BMP2
<b>Swissprot</b>	P12643,P21274,P49001
<b>Synonyms</b>	BDA2,BMP-2,BMP-2A,Bmp2,BMP2,BMP2A,Bone morphogenetic protein 2

### Product Information

<b>Buffer</b>	PBS with 0.02% sodium azide, 1% protective protein and 50% glycerol, pH7.4
<b>Purify</b>	Affinity purification
<b>Clone No.</b>	2H6D12
<b>Dilution</b>	IHC 1:200-1:800

### Background

Bone morphogenetic protein-2 (BMP-2) is a member of the transforming growth factor-beta (TGFB) superfamily. BMP2 is synthesized as a 60 kDa precursor that is processed in the secretory pathway to a small 18 kDa monomer; 2 monomers then associate to form the active 30 kDa homodimer, which binds to its receptor. There is also a 40-45 kDa form of BMP2, as an amino-terminal propeptide. BMP2 can induce bone formation and regeneration during early embryonic development. It is involved in the hedgehog pathway, TGF beta signaling pathway, and cytokine-cytokine receptor interaction.

#### For Research Use Only

Thank you for your recent purchase.  
 If you would like to learn more about antibodies, please visit [www.elabscience.com](http://www.elabscience.com).

**Focus on your research  
 Service for life science**

Applications: WB-Western Blot IHC-Immunohistochemistry IF-Immunofluorescence IP-Immunoprecipitation FC-Flow cytometry ChIP-Chromatin Immunoprecipitation Reactivity: H-Human R-Rat M-Mouse Mk-Monkey Dg-Dog Ch-Chicken Hm-Hamster Rb-Rabbit Sh-Sheep Pg-Pig Z-Zebrafish X-Xenopus C-Cow.