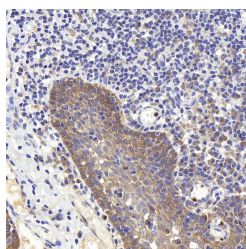


PERK Polyclonal Antibody

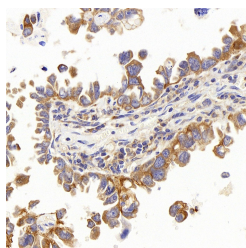
Catalog No.	E-AB-70363	Reactivity	H
Storage	Store at -20°C. Avoid freeze / thaw cycles.	Host	Rabbit
Applications	IHC	Isotype	IgG

Note: Centrifuge before opening to ensure complete recovery of vial contents.

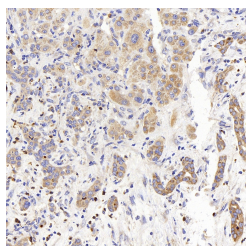
Images



Immunohistochemistry analysis of paraffin-embedded human tonsil using PERK Polyclonal Antibody at dilution of 1:400.



Immunohistochemistry analysis of paraffin-embedded human lung cancer using PERK Polyclonal Antibody at dilution of 1:400.



Immunohistochemistry analysis of paraffin-embedded human liver cancer using PERK Polyclonal Antibody at dilution of 1:400.

Immunogen Information

Immunogen	KLH conjugated Synthetic peptide corresponding to Human PERK
Swissprot	Q9NZJ5
Synonyms	EIF2AK3, PEK, PERK, WRS, eukaryotic translation initiation factor 2 alpha kinase 3

Product Information

Buffer	PBS with 0.02% sodium azide, 1% protective protein and 50% glycerol, pH7.4
Purify	Affinity purification
Dilution	IHC 1:400-1000

Background

The protein encoded by this gene phosphorylates the alpha subunit of eukaryotic translation-initiation factor 2 (EIF2), leading to its inactivation, and thus to a rapid reduction of translational initiation and repression of global protein synthesis. It is a type I membrane protein located in the endoplasmic reticulum (ER), where it is induced by ER stress caused by malfolded proteins. Mutations in this gene are associated with Wolcott-Rallison syndrome.

For Research Use Only

Thank you for your recent purchase.
 If you would like to learn more about antibodies, please visit www.elabscience.com.

**Focus on your research
 Service for life science**

Applications: WB-Western Blot IHC-Immunohistochemistry IF-Immunofluorescence IP-Immunoprecipitation FC-Flow cytometry ChIP-Chromatin Immunoprecipitation Reactivity: H-Human R-Rat M-Mouse Mk-Monkey Dg-Dog Ch-Chicken Hm-Hamster Rb-Rabbit Sh-Sheep Pg-Pig Z-Zebrafish X-Xenopus C-Cow.