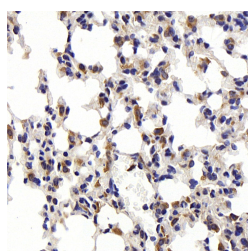


## CD68 Polyclonal Antibody

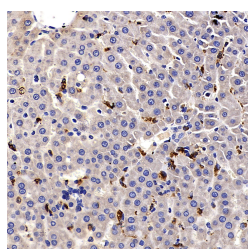
<b>Catalog No.</b>	E-AB-70389	<b>Reactivity</b>	M,R
<b>Storage</b>	Store at -20°C. Avoid freeze / thaw cycles.	<b>Host</b>	Rabbit
<b>Applications</b>	IHC	<b>Isotype</b>	IgG

**Note:** Centrifuge before opening to ensure complete recovery of vial contents.

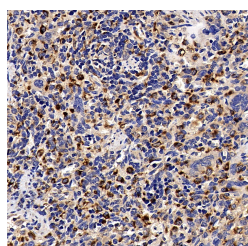
### Images



Immunohistochemistry analysis of paraffin-embedded mouse lung using CD68 Polyclonal Antibody at dilution of 1:300.



Immunohistochemistry analysis of paraffin-embedded rat liver using CD68 Polyclonal Antibody at dilution of 1:500.



Immunohistochemistry analysis of paraffin-embedded Rat spleen using CD68 Polyclonal Antibody at dilution of 1:500.

### Immunogen Information

<b>Immunogen</b>	KLH conjugated Synthetic peptide corresponding to Mouse CD68
<b>Swissprot</b>	P31996
<b>Synonyms</b>	CD68,CD68 Molecule,Scavenger Receptor Class D, Member 1 ,Macrophage Antigen CD68,GP110 ,Macrosialin,SCARD1,LAMP4

### Product Information

<b>Buffer</b>	PBS with 0.02% sodium azide, 1% protective protein and 50% glycerol, pH7.4
<b>Purify</b>	Affinity purification
<b>Dilution</b>	IHC 1:200-1:800

### Background

CD68 is a type I transmembrane glycoprotein that is highly expressed by human monocytes and tissue macrophages. It belongs to the lysosomal/endosomal-associated membrane glycoprotein (LAMP) family and primarily localizes to lysosomes and endosomes with a smaller fraction circulating to the cell surface. CD68 is also a member of the scavenger receptor family. It may play a role in phagocytic activities of tissue macrophages.

#### For Research Use Only

Thank you for your recent purchase.  
 If you would like to learn more about antibodies, please visit [www.elabscience.com](http://www.elabscience.com).

**Focus on your research  
 Service for life science**

Applications:WB-Western Blot IHC-Immunohistochemistry IF-Immunofluorescence IP-Immunoprecipitation FC-Flow cytometry ChIP-Chromatin Immunoprecipitation Reactivity: H-Human R-Rat M-Mouse Mk-Monkey Dg-Dog Ch-Chicken Hm-Hamster Rb-Rabbit Sh-Sheep Pg-Pig Z-Zebrafish X-Xenopus C-Cow.