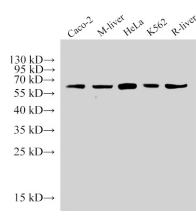


HSP60 Polyclonal Antibody

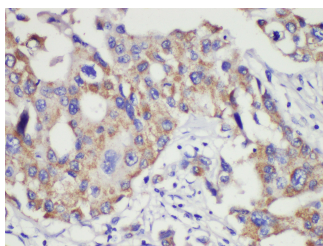
Catalog No.	E-AB-40486	Reactivity	H,M,R
Storage	Store at -20°C. Avoid freeze / thaw cycles.	Host	Rabbit
Applications	WB,IHC	Isotype	IgG

Note: Centrifuge before opening to ensure complete recovery of vial contents.

Images



Western Blot analysis of 1)Caco-2, 2)Mouse liver, 3)HeLa, 4)K562, 5)Rat liver using HSP60 Polyclonal Antibody at dilution of 1:2000



Immunohistochemistry of paraffin-embedded Human breast cancer using HSP60 Polyclonal Antibody at dilution of 1:200.

Immunogen Information

Immunogen	Synthetic peptide of Human 60 kDa heat shock protein, mitochondrial
GeneID	3329
Swissprot	P10809
Synonyms	CH60, Chaperonin 60, CPN60, GROEL, HLD4, HSP60, HSP65, HSPD1, HuCHA60, SPG13

Product Information

Calculated MW	17,61 kDa
Observed MW	61 kDa
Buffer	PBS with 0.05% Proclin300, 50% glycerol, pH7.3.
Purify	Antigen Affinity Purification
Dilution	WB 1:500-1:2000 IHC 1:50-1:200

Background

HSPD1, also known as HSP60, belongs to the chaperonin family and acts as a chaperone to enhance cell survival under physiological stresses. Hsp60 has been shown to be connected with many aspects of cell functions such as protein folding and assembling of polypeptide chains in mitochondria. Recently it has been reported that HSP60 is associated with apoptosis or inhibition of cancer cell growth. (21822415)

For Research Use Only

Thank you for your recent purchase.
 If you would like to learn more about antibodies, please visit www.elabscience.com.

**Focus on your research
 Service for life science**

Applications: WB-Western Blot IHC-Immunohistochemistry IF-Immunofluorescence IP-Immunoprecipitation FC-Flow cytometry ChIP-Chromatin Immunoprecipitation Reactivity: H-Human R-Rat M-Mouse Mk-Monkey Dg-Dog Ch-Chicken Hm-Hamster Rb-Rabbit Sh-Sheep Pg-Pig Z-Zebrafish X-Xenopus C-Cow.